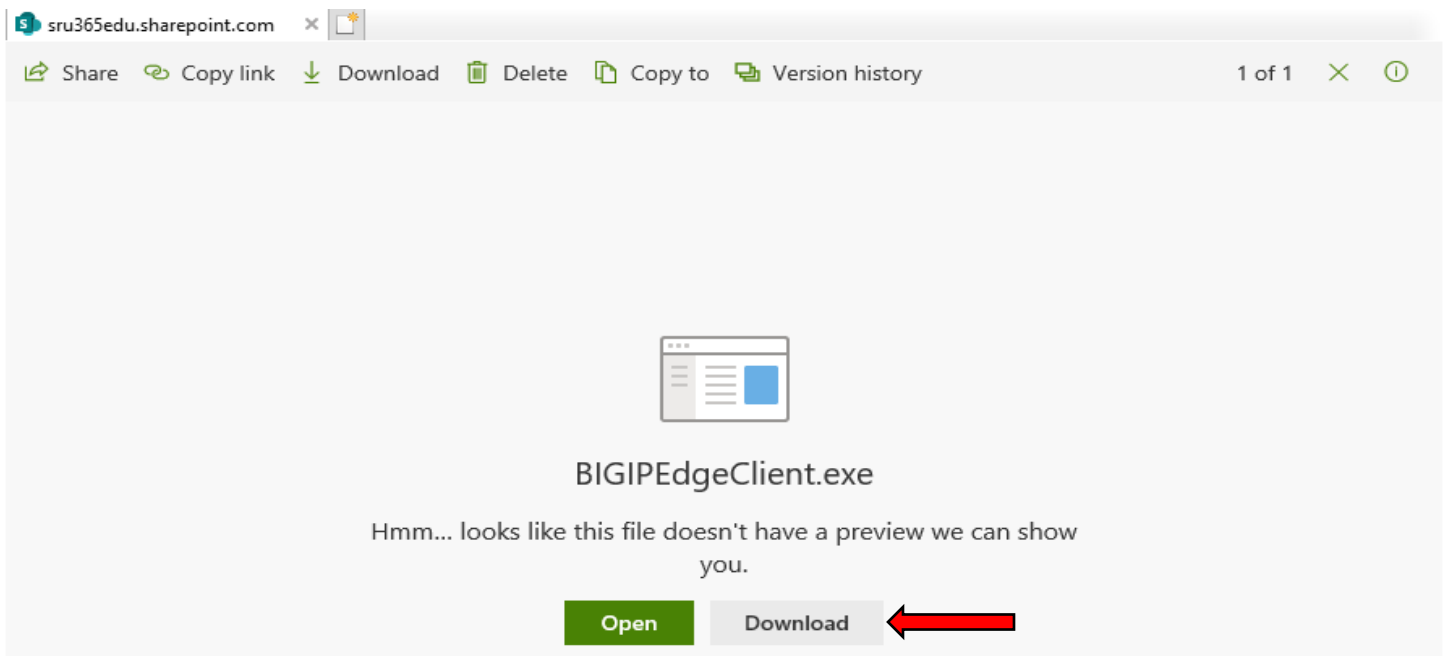


You can download the VPN client from the following address

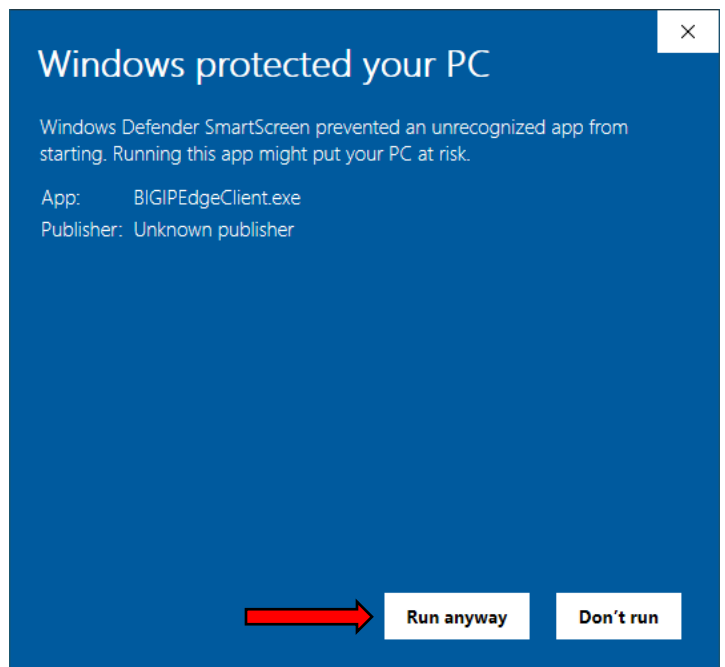
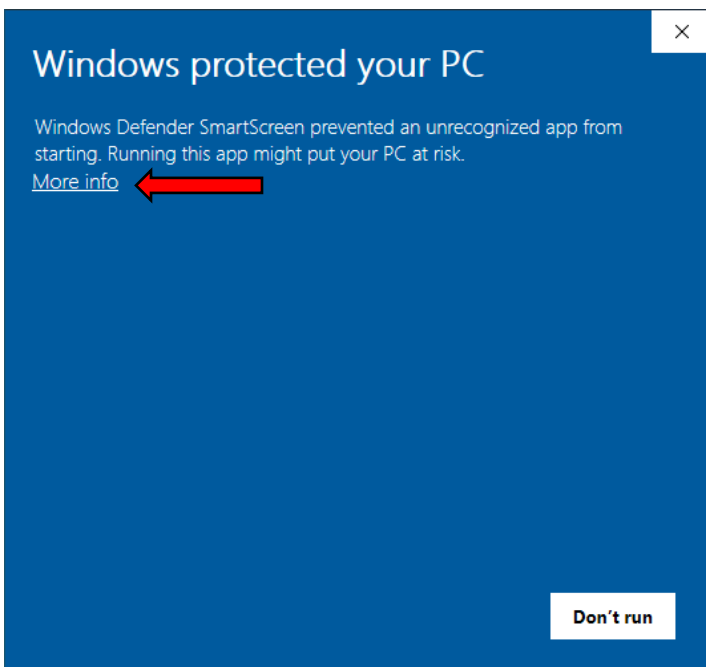
<https://sru365edu.sharepoint.com/:u:/s/SRUIATSEnterpriseServices/ESmVGBOOnWtZJhDFtr0dnDKk BoujvXEpoGEF5GFYLx6GVA?e=l2fQo9>

If you are asked to login, log in with your SRU email address and password.

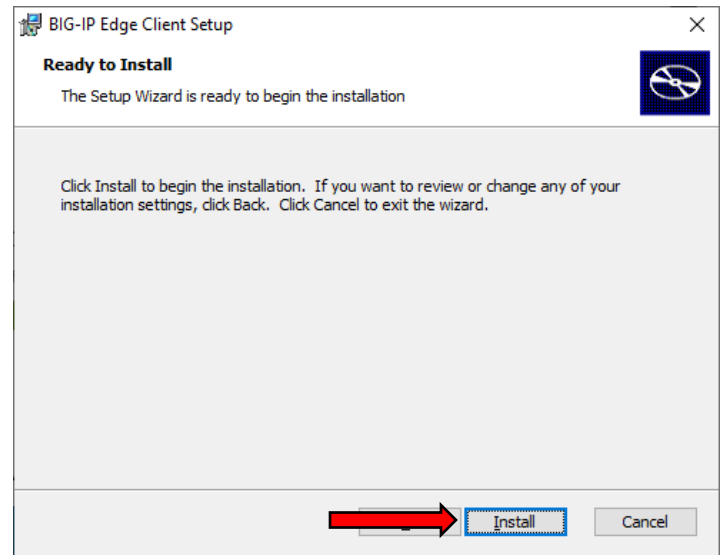
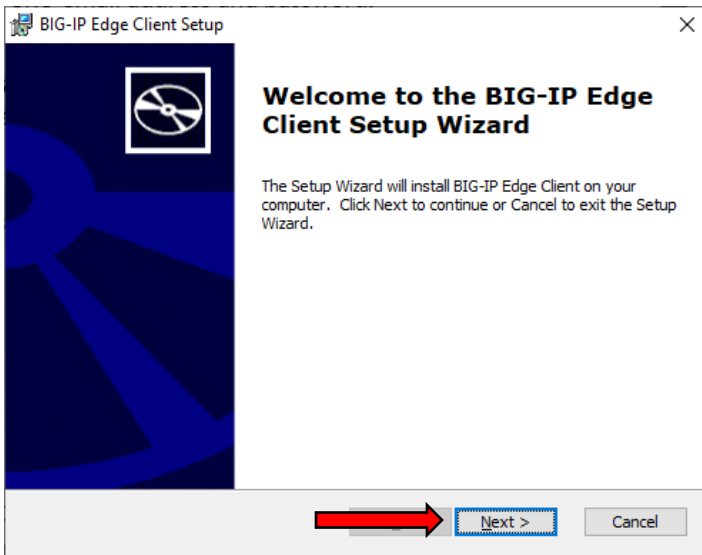
Upon successful login, click the “Download” button. Depending on your browser and settings it will either download the file to your default download location or prompt you where you would like to save the file:



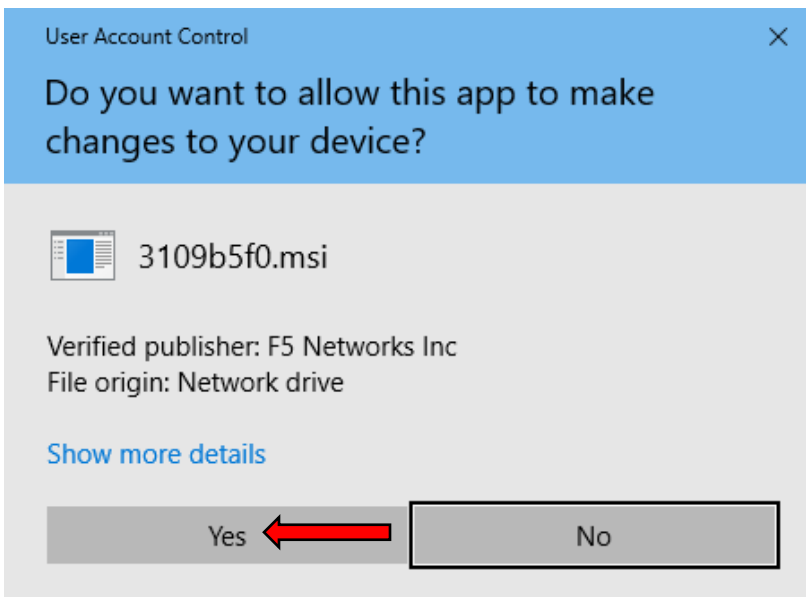
Once the file has been downloaded, double click the installation file in the location where you saved it. If you get the following window, click “More info” then click “Run anyway”:



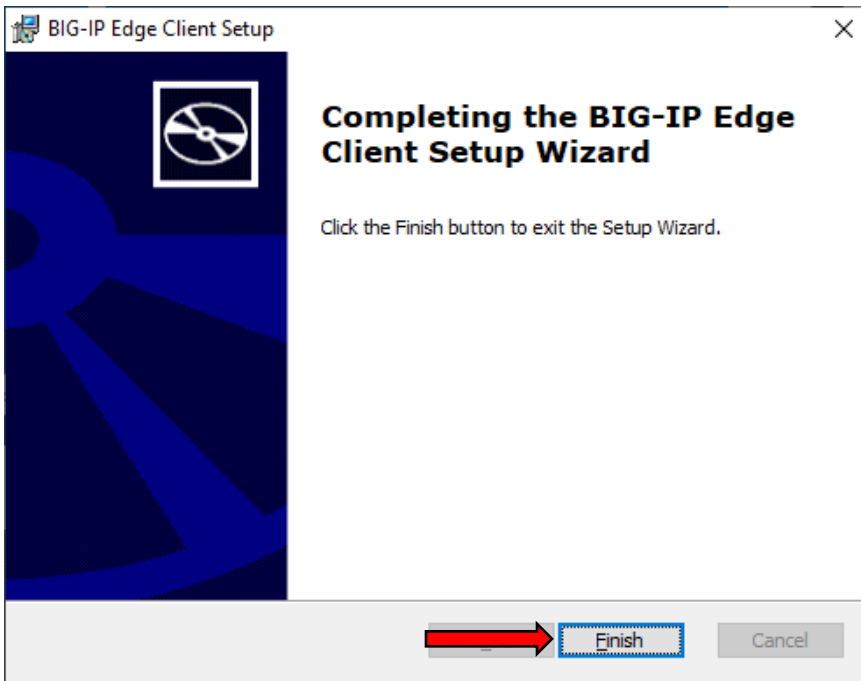
An installation window will appear, click “Next” then click “Install”:



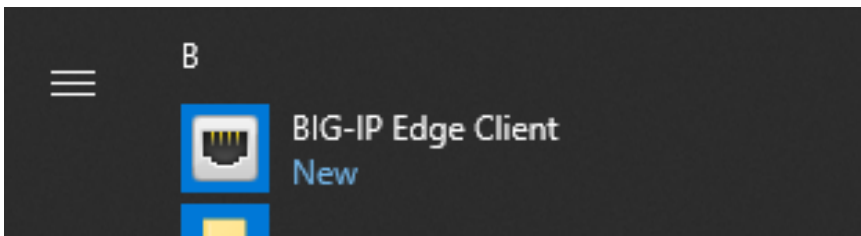
If you get the following prompt, click “Yes”:



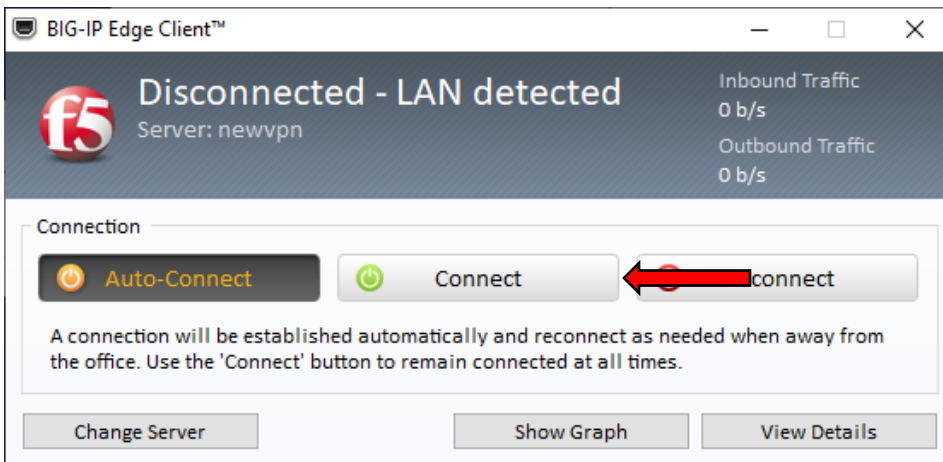
When the installation has finished, click “Finish”:



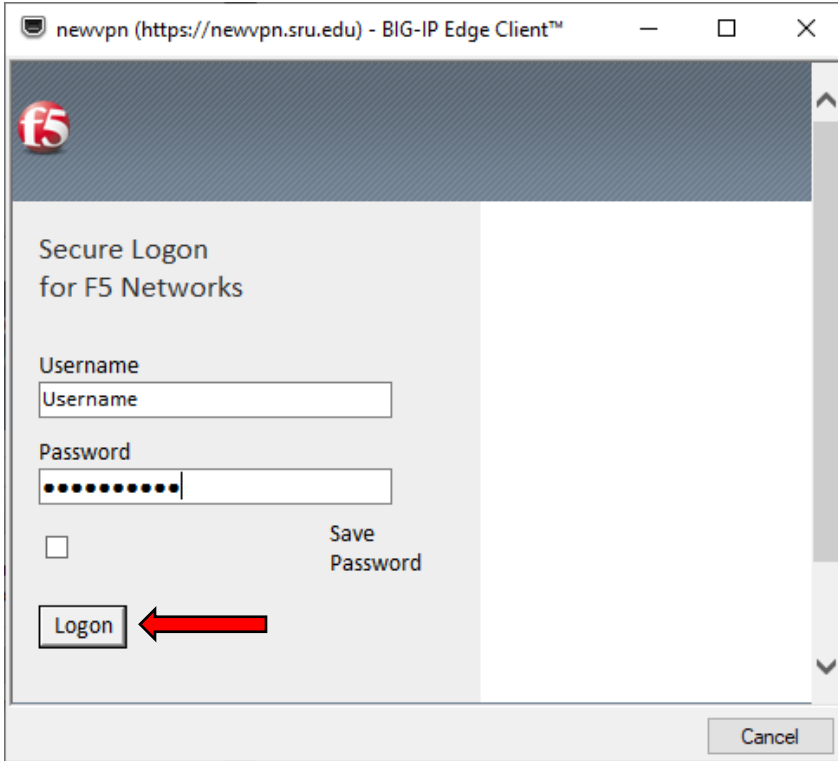
Once the installation has finished, you can start the client from the Windows Start Menu, click “BIG-IP Edge Client”:



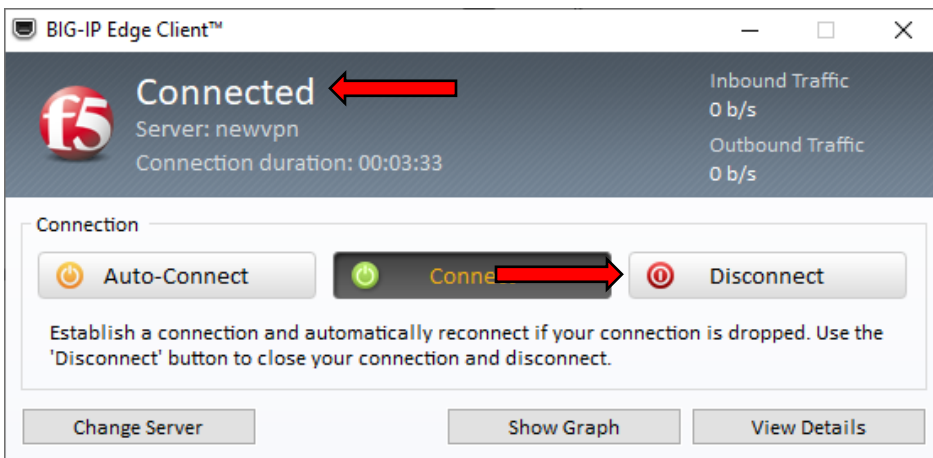
Once the client window appears, click on “Connect”:



Another window will appear prompting for your credentials, enter your SRU credentials and click the “Logon” button:



The client will then have a status of “Connected”. When you are finished with the VPN connection, click the “Disconnect” button. Once the status shows “Disconnected”, you can close the client by clicking the “X” in the upper right corner:



Also, once the client has been started, you can control it by clicking on the F5 symbol in the Windows Notification Area of the Windows taskbar (if you do not see it, click the up arrow):

