



President's Report Council of Trustees Meeting

KAREN RILEY, Ph.D.
September 19, 2025

We have an amazing team!

- Office of the President
- Marketing and Communications
- Office of the Provost
- Enrollment Management Team
- Finance Team
- Strategic Planning Teams
- Student Affairs
- Human Resources
- University Advancement and Alumni Engagement

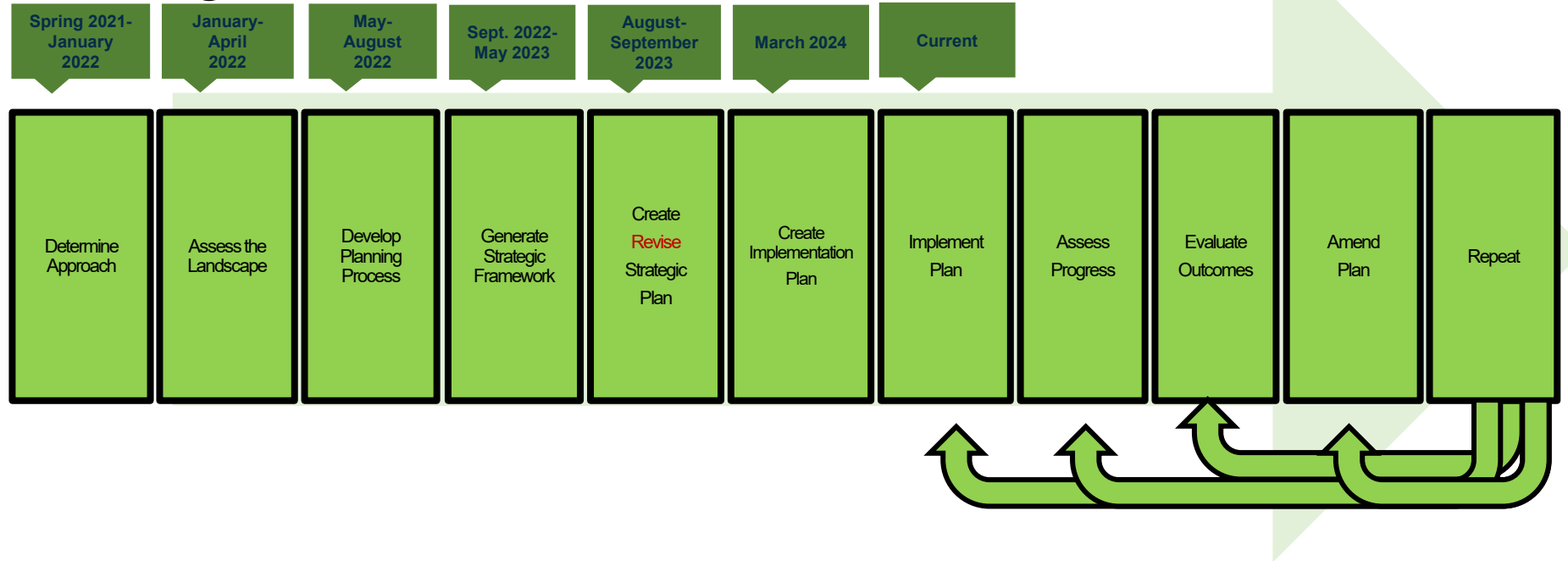


“Our goals are aspirant in nature, with a foundation based on the pragmatism of our previous leaders. We want SRU to be a first-choice organization – first choice for students, first choice for employees, first choice for employers and first choice for partners. We will be the first choice because it will FEEL different here. There must be an expectation of excellence – from within this organization and from those who come here to learn, to grow and to thrive. Mediocrity has never been an option at The Rock, and we cannot ever be content with the status quo. Our pride in ourselves, in each other, and in SRU will not allow it. Translating our pride into action means providing an experience for the people with whom we engage that exceeds their expectations – it means the norm at SRU is extreme engagement, and this plan will bring these goals to fruition.”

SLIPPERY ROCK UNIVERSITY
THE FIRST CHOICE



Strategic Plan



The Development of the Strategic Planning Framework is a collaborative effort led by the Academic and Non-Academic community.

Assess progress
Evaluate outcomes
Amend plan
AND.....

Celebrate success
&
Express gratitude

University Strategic Plan Pillars:



- **Pillar 1: Commitment to a Robust, Supportive, and Inclusive Culture**
 - Dr. Dallas Jackson, associate professor, Physical and Health Education
 - Ms. Amanda Nichols, payroll and employment manager, Payroll
- **Pillar 2: Commitment to Academic Discovery and Human Growth**
 - Dr. Keith Dils, dean, College of Education
 - Dr. Steve Verba, associate professor, Exercise Science
- **Pillar 3: Commitment to Community Impact and Collaboration**
 - Dr. Christopher Cole, assistant vice president/Auxiliary Operations & Student Support
 - Dr. Melissa Swauger, professor, Non-Profit Mgmt., Empowerment, and Diverse Studies
- **Pillar 4: Commitment to Financial Sustainability and Resource Stewardship**
 - Dr. Nicole Dafoe, dean, College of Engineering and Science
 - Dr. David Jordan, professor, Healthcare Administration and Management

By the Numbers - Strategic Plan Structure

Pillars	4
Goals	15
Strategies	60
Faculty & Staff Volunteers	84
Action Items Completed	155

SLIPPERY ROCK UNIVERSITY

FALL 2025 ENROLLMENT

TOP 3 MAJORS



568

Exercise
Science



452

Safety
Management



401

Early Childhood/
Special Education

*All numbers on this graphic are subject to change as Pennsylvania's State System of Higher Education will verify and report enrollments in October. Census data for schools are taken on the 15th day of the semester for national and state reporting purposes.

8,625 **+2.75%**
Students From Last Year



7,088 Undergraduates **1,537** Graduate Students



11%
Are Underrepresented
Minorities



27%
Are First-Generation
College Students



58%
Are Female



86%*
Of First-Year
Students Retained
From Last Fall

*As of Sept. 18, 2025

**AN SRU
RECORD!**

77%
National Average



14%
From Butler
County

20%
From
Allegheny
County



89%
From Pennsylvania

FIRST-YEAR STUDENTS



1,549

Total



+0.1%

Increase from Fall 2024



3.77

High School GPA



76%

Graduated in the Top Half
of their High School Class



40%

Graduated in the Top Quarter
of their High School Class

SRU Chart of Publication Trends

Category	2024-2025	2023-2024	2022-2023
Books	6	7	1
Edited Books	2	2	1
Book Chapters	30	22	13
Journal Articles	40	63	47
Book Reviews	3	3	0
Published Conference Proceedings	15	7	2
Artistic Commissions and Performances	20	13	18
Conference Presentations	60	49	3
Faculty Sponsored Student Research Presentations	55	NA	NA
Total	231	169	85

SLIPPERY ROCK UNIVERSITY

ACADEMIC ALL-AMERICAN OF THE YEAR



Brayden Long, '24 earns the highest academic honor in the nation for Division II college athletes.

**SRU is a National Leader
in Academic All-Americans®
for 2024-25**



14 total Academic All-Americans®

#3 among all Division II institutions

#8 among all Divisions *(tied with Duke, Grand Valley State, and Middlebury)*

**SRU is a leader in Lifetime Academic
All-Americans® in Division II**

151 total Academic All-Americans®

#1 in the Atlantic Region

#1 in the Pennsylvania State Athletic Conference

#6 in the Nation

SRU is a recognized leader in academics

Best Regional University

– *U.S. News and World Report*

Best for Families

– *Pittsburgh Parent Magazine*

#4 Top Public University

in Pennsylvania

– *Niche.com*

Best Mid-Atlantic College

– *Princeton Review*

#2 Most Selective

in Pittsburgh area

– *Pittsburgh Business Times*

#4 Best Value

in Pennsylvania

– *Research.com*

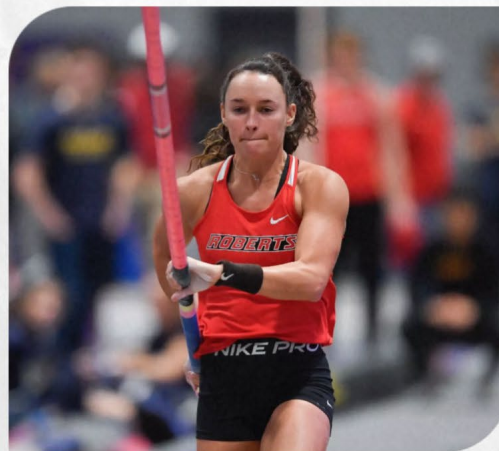
SlipperyRock
University™



Scholar-Athletes of the Year

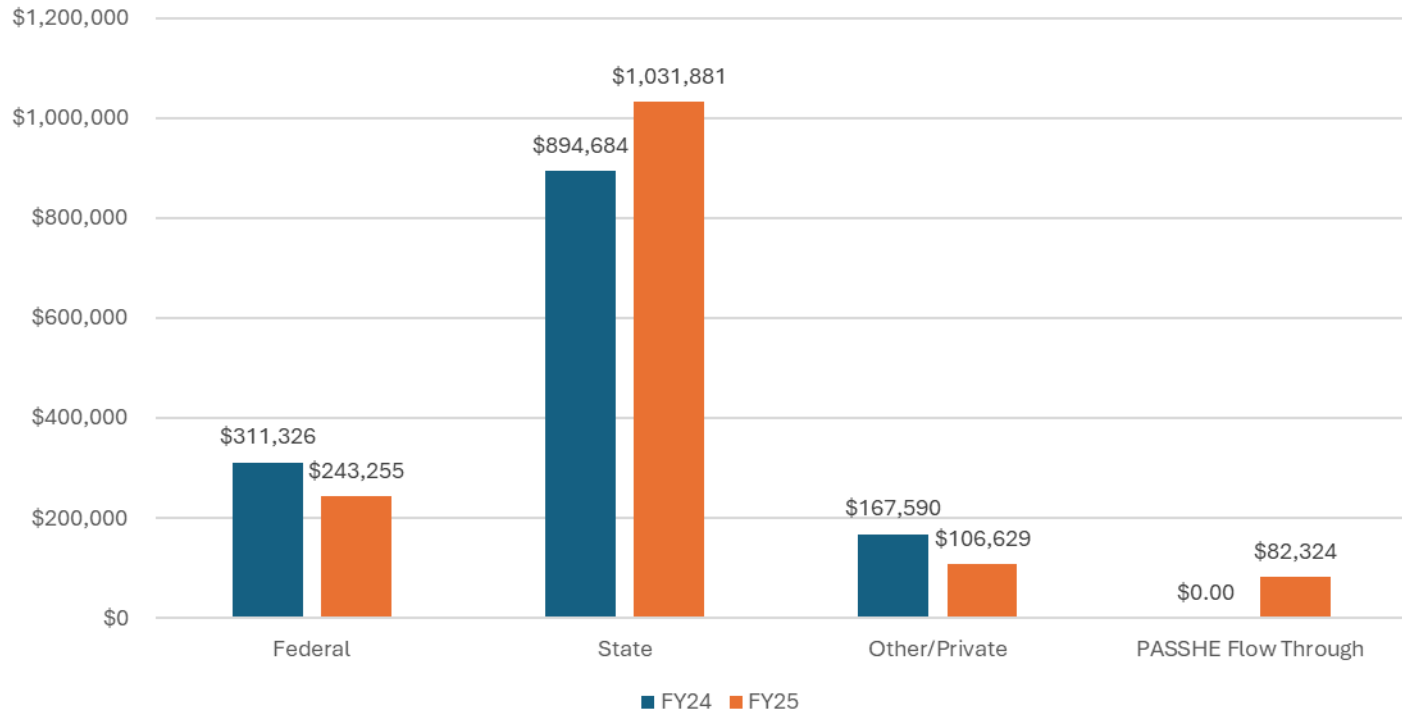


Brayden Long
Slippery Rock University



Brynn King
Roberts Wesleyan University

FY24 & 25 Funding





Thank you Trustee Smith

Climate and Culture Pillar #1

- Working Group – Climate and Culture position
- Working under the PASSHE model
- Meet two times to explore options
- Make a decision and move forward
 - Wayne Forbes
 - Kari-Anne Innes
 - Jenny Kawata
 - Amanda Nichols
 - Becky Thomas
 - Michael White

You Rock!

The SRU community **ROCKS!**

Acknowledge the positive contributions of a peer by submitting a quick summary below.

[+ New Submission](#)



YOU
Rock



sru.edu/you-rock

University Strategic Plan Next Steps:



Met with Pillar co-chairs:

- Co Chairs will meet with cabinet to discuss successes and challenges of the previous year.

Next Steps: Implementation Plans:

- Pillar groups will set priorities.

Co-chairs will meet with their respective working groups:

- Collaborate with other pillar co-chairs, leads, and working groups to identify areas of collaboration or redundancy
- Break down strategies into activities, develop timeline/structure for each activity, track progress (by semester)

Training/Support:

Dr. Jessica Lerner, strategic planning consultant, training/support

Ms. Tina Moser, chief of staff, strategic plan coordinator/on-campus support

Questions

YOU
Rock



sru.edu/you-rock