

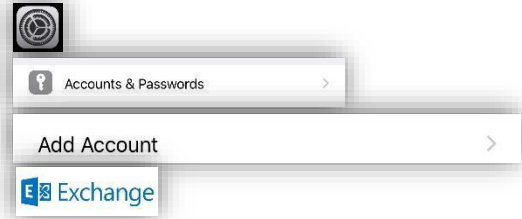
# Slippery Rock University

Smart Phone Configuration

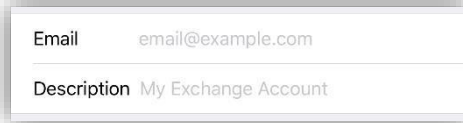
## [iPhone Setup](#) or [Droid Setup](#)

### iPhone Setup

1. Tap the Settings icon
2. Scroll down and tap Accounts & Passwords
3. Tap Add Account
4. Tap Exchange



5. Fill out your SRU credentials



6. Tap Configure Manually



7. Use the following information to fill out this screen

Email	email@example.com
Server	Optional
Domain	Optional
Username	Required
Password	Required

**Email:** Your SRU email address

**Server:** outlook.office365.com

**Domain:** leave blank

**Employees:** [firstname.lastname@sru.edu](#)


**Students:** [abc1234@sru.edu](#)

# Slippery Rock University

Smart Phone Configuration

## [iPhone Setup](#) or [Droid Setup](#)

### Droid Setup

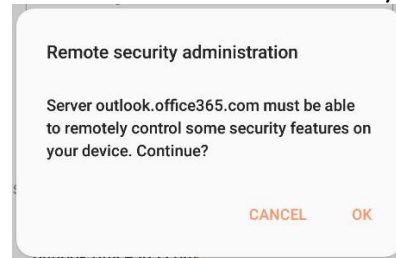
1. Tap the email icon 
2. Tap the Add New Account button
3. Type in your SRU email address and password



4. Tap Microsoft Exchange ActiveSync

5. **Domain\username: \FullSRUEmailAddress**  
**Exchange server: outlook.office365.com**

6. Click OK on the Remote Security Administration



7. You can choose your preferences

8. Tap Activate 