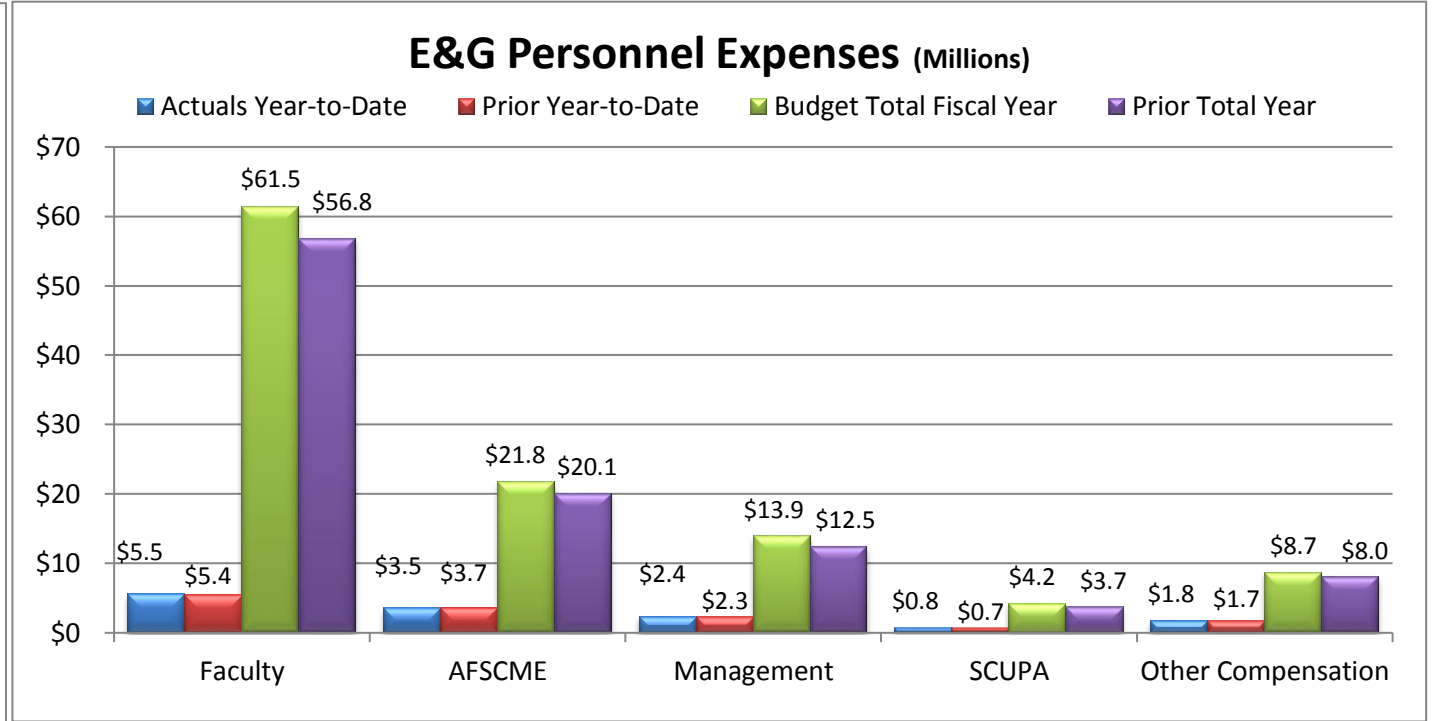
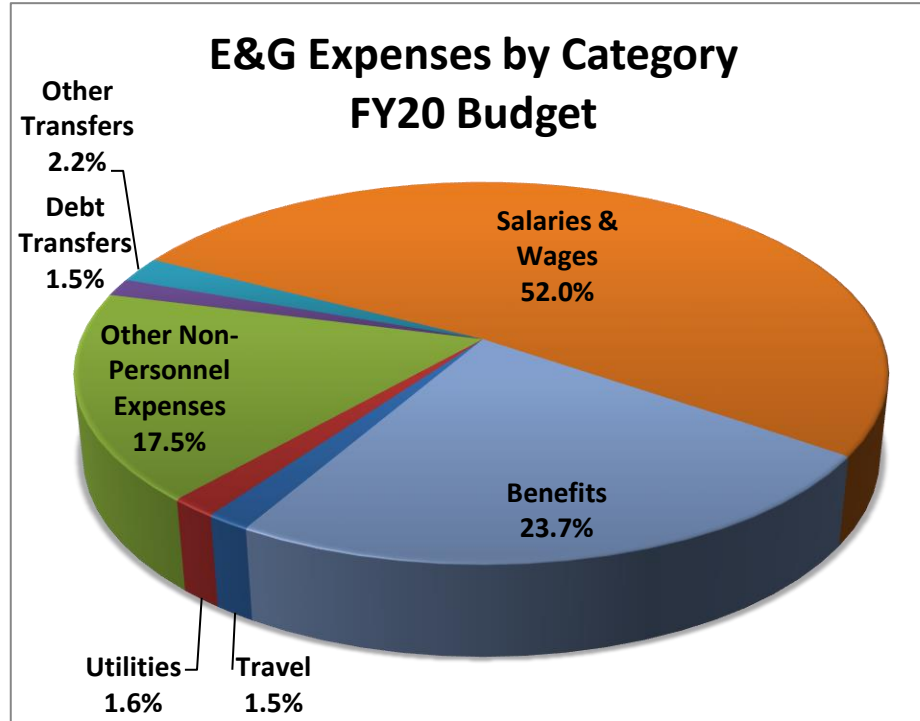
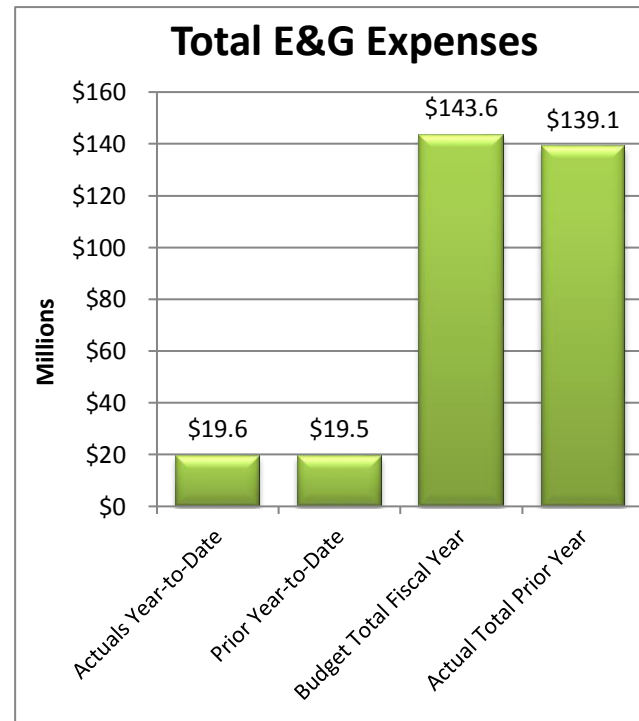
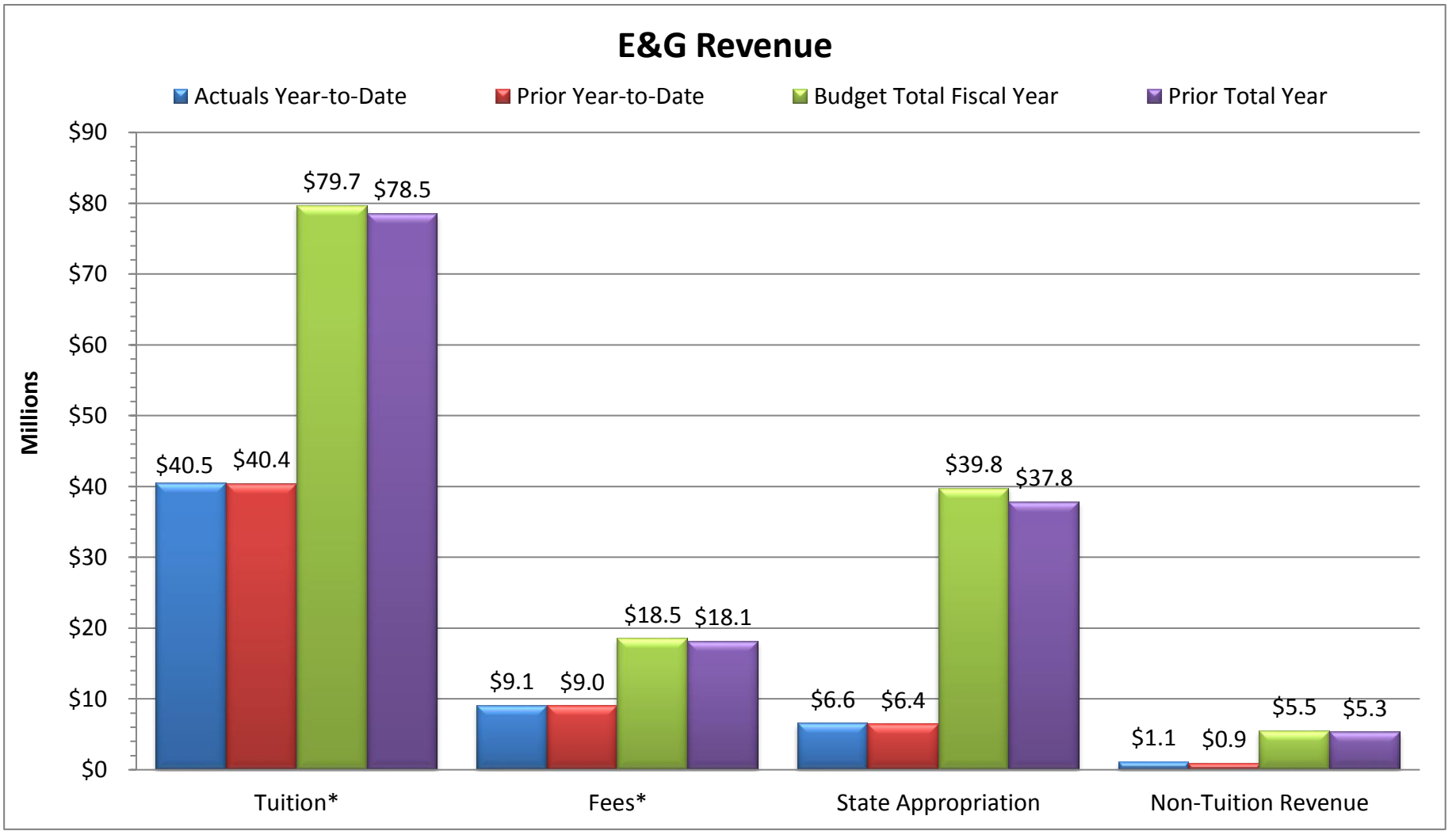


Slippery Rock University
Monthly Financial Report
As of Saturday, August 31, 2019

Total E&G			
Selected Revenue & Expenses			
	Budget	Actual	
	For Approval	Year-to-Date	% of
	2019-20	2019-20	Budget
Revenue:			
Tuition*	\$79,709,645	\$40,499,883	50.8%
Fees*	\$18,549,953	\$9,088,615	49.0%
State Appropriation	\$39,786,283	\$6,573,946	16.5%
Non-Tuition Revenue	\$5,510,302	\$1,105,775	20.1%
Total Revenue	\$143,556,183	\$57,268,219	39.9%
Expenses:			
Personnel Related	\$108,609,470	\$14,040,921	12.9%
Non-Personnel Costs:			
Travel	\$2,177,485	\$280,644	12.9%
Utilities	\$2,331,410	\$369,311	15.8%
Other Non-Personnel Expenses	\$25,192,191	\$4,411,437	17.5%
Mandatory Transfers (Debt)	\$2,132,019	\$0	0.0%
Non-Mandatory Transfers	\$3,113,607	\$505,581	16.2%
Total Expenses	\$143,556,183	\$19,607,894	13.7%
Net Surplus/(Deficit/Use of Reserves)	\$0	\$37,660,325	

*Tuition & Fee revenue is recorded/recognized in advance of many of the corresponding expenses



Notes:

As of August 31, 2019, 16.7% of the fiscal year has passed and 83.3% remains. Note that revenue and several expense categories are not recognized evenly throughout the year.

Revenue:

Revenue - Tuition and fee revenue as of August 31, 2019 includes the second half of Summer 2019 and Fall 2019 revenue. Note that total revenue will be recognized with each new term throughout the fiscal year, to June 30, 2020.

Non-tuition revenue consists of interest income, rental of facilities, cell tower reimbursement, ID card fee, transcript fee, ticket sales, parking decals & tickets, Pepsi funding.

Expenses:

Personnel costs are not incurred evenly throughout the year, but rather follow the established pay schedules.

Other Non-personnel expenses include such costs as equipment and furnishings, scholarships, library costs, contracted services, advertising, software license fees, maintenance/office supplies, bad debt expense, software, etc.