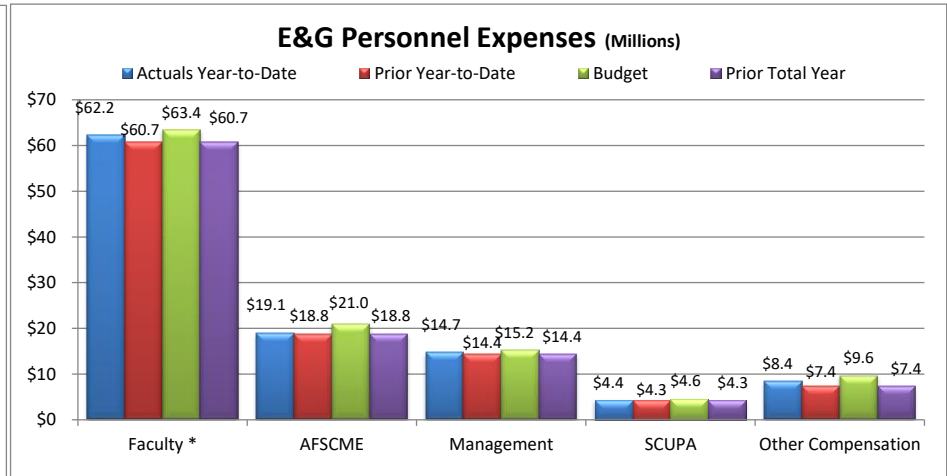
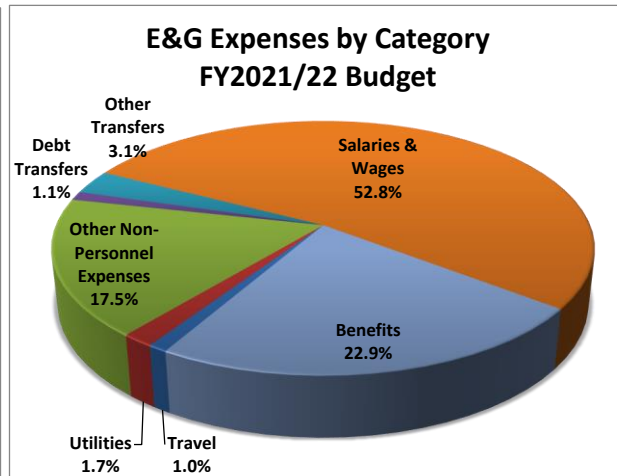
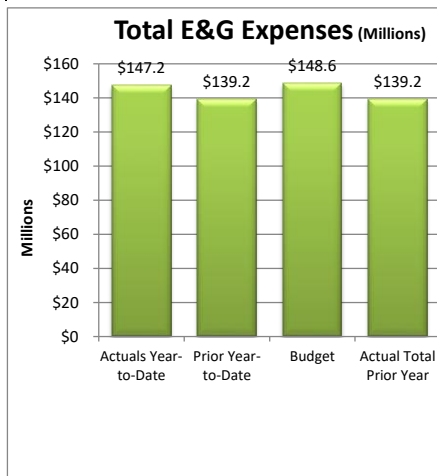
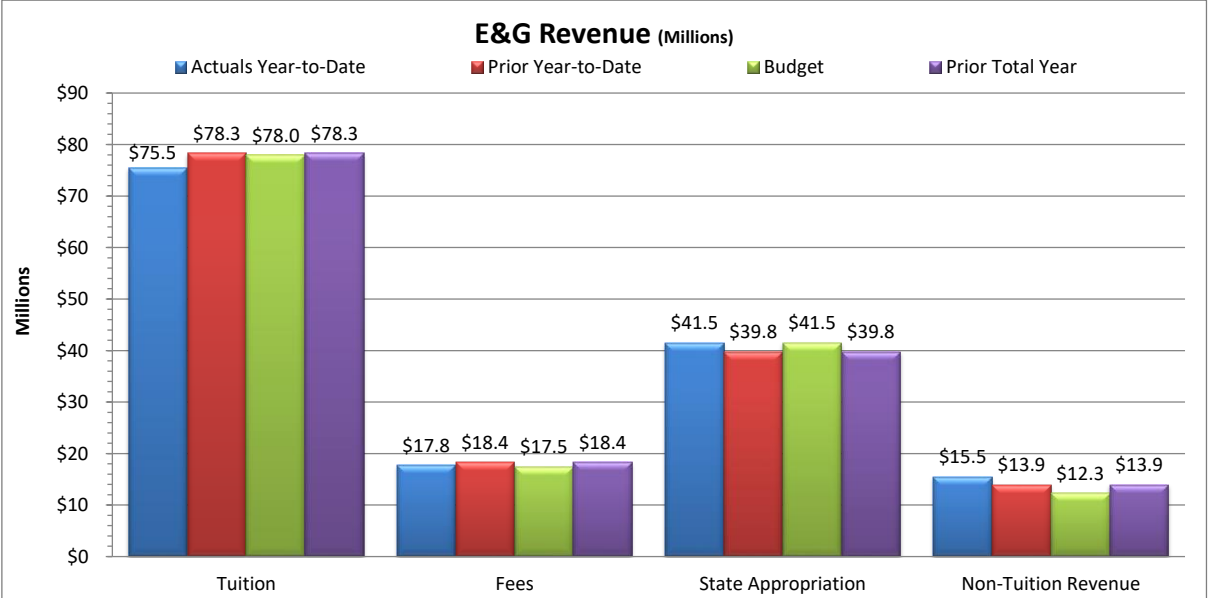


Slippery Rock University
Fiscal Year 2021/22 Through June 30, 2022

Total E&G
Summary Revenue & Expenses

	Budget 2021/22	Actual Year-to-Date 2021/22	YTD % of Total Budget Recognized
Revenue:			
Tuition	\$77,973,605	\$75,489,588	96.8%
Fees	\$17,481,141	\$17,776,298	101.7%
State Appropriation	\$41,536,545	\$41,536,545	100.0%
Non-Tuition Revenue	\$12,338,304	\$15,534,314	125.9%
Total Revenue	\$149,329,595	\$150,336,745	100.7%
Expenses & Transfers:			
Personnel Related	\$112,447,990	\$108,767,282	96.7%
Non-Personnel Costs:			
Travel	\$1,485,932	\$862,936	58.1%
Utilities	\$2,472,778	\$2,917,251	118.0%
Other Non-Personnel Expenses	\$25,936,725	\$29,793,358	114.9%
Mandatory Transfers (Debt)	\$1,657,256	\$1,657,256	100.0%
Non-Mandatory Transfers	\$4,552,566	\$3,246,867	71.3%
Total Expenses & Transfers	\$148,553,247	\$147,244,950	99.1%
Net Surplus/(Deficit/Use of Reserves)	\$776,348	\$3,091,795	



Notes:

Revenue:

Tuition and fee revenue are as of June 30, 2022 includes deferred revenue from Summer 2021, Fall 2021, Winter 2021, Spring 2022 and Summer 2022. Note that total revenue will be recognized throughout the fiscal year, to June 30, 2022.

Non-tuition revenue consists of interest income, rental of facilities, cell tower reimbursement, ID card fee, transcript fee, ticket sales, parking decals & tickets, Pepsi funding.

Expenses:

Personnel costs are not incurred evenly throughout the year, but rather follow the established pay schedules.

Other Non-personnel expenses include such costs as equipment and furnishings, scholarships, library costs, contracted services, advertising, software license fees, supplies, bad debt, etc.