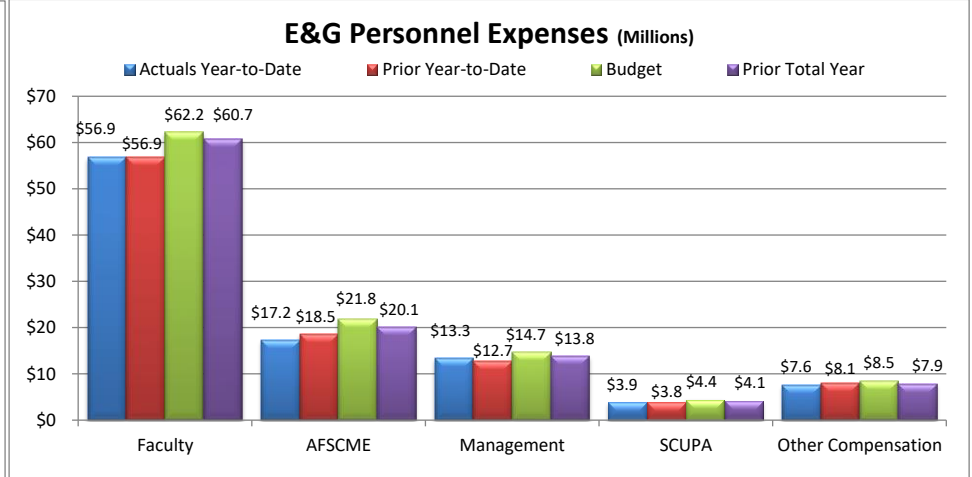
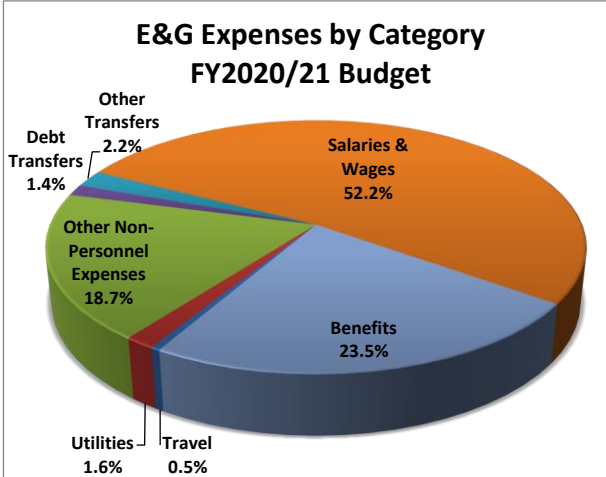
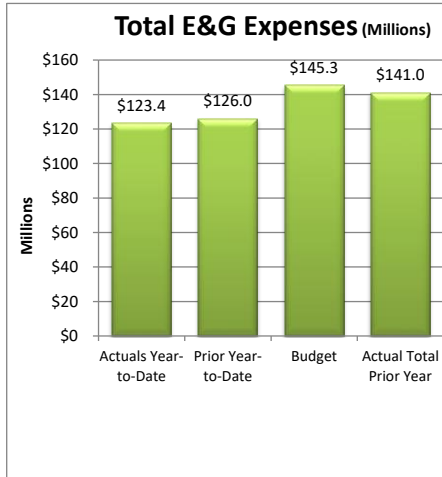
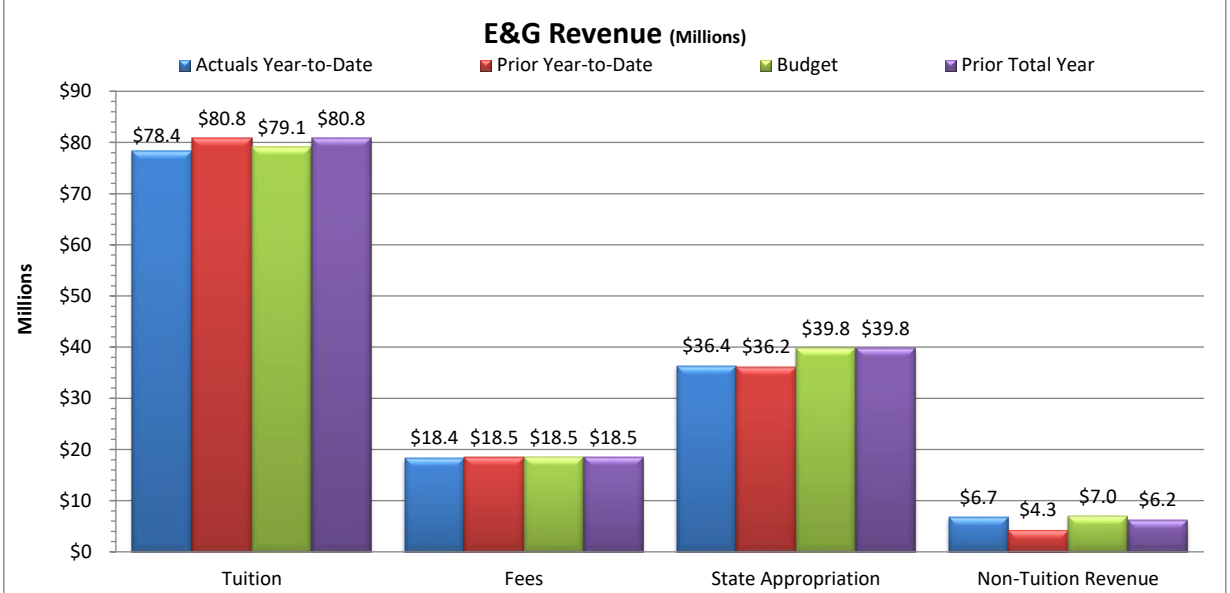


**Total E&G  
Summary Revenue & Expenses**

	Budget 2020-21	Actual Year-to-Date 2020-21	% of Budget
<b>Revenue:</b>			
Tuition	\$79,069,245	\$78,370,352	99.1%
Fees	\$18,456,073	\$18,352,843	99.4%
State Appropriation	\$39,786,283	\$36,374,129	91.4%
Non-Tuition Revenue	\$6,977,615	\$6,743,326	96.6%
<b>Total Revenue</b>	<b>\$144,289,215</b>	<b>\$139,840,650</b>	<b>96.9%</b>
<b>Expenses:</b>			
Personnel Related	\$110,005,475	\$98,937,390	89.9%
<b>Non-Personnel Costs:</b>			
Travel	\$693,544	\$71,245	10.3%
Utilities	\$2,276,396	\$2,024,632	88.9%
Other Non-Personnel Expenses	\$27,181,298	\$21,453,898	78.9%
Mandatory Transfers (Debt)	\$2,035,984	\$0	0.0%
Non-Mandatory Transfers	\$3,125,356	\$925,237	29.6%
<b>Total Expenses</b>	<b>\$145,318,053</b>	<b>\$123,412,401</b>	<b>84.9%</b>
<b>Net Surplus/(Deficit/Use of Reserves)</b>	<b>(\$1,028,838)</b>	<b>\$16,428,249</b>	



**Notes:**

As of May 31, 2021, 91.7% of the fiscal year has passed and 8.3% remains. Note that revenue and several expense categories are not recognized evenly throughout the year.

**Revenue:**

Tuition and fee revenue are as of May 31, 2021 which includes tuition & fee revenue from Fall 2020, deferred revenue from Summer 2020 and current year Summer 2021, Winter, and Spring 2021. Note that total revenue will be recognized throughout the fiscal year, to June 30, 2021.

Non-tuition revenue consists of interest income, rental of facilities, cell tower reimbursement, ID card fee, transcript fee, ticket sales, parking decals & tickets, Pepsi funding.

**Expenses:**

Personnel costs are not incurred evenly throughout the year, but rather follow the established pay schedules.

Other Non-personnel expenses include such costs as equipment and furnishings, scholarships, library costs, contracted services, advertising, software license fees, supplies, bad debt, etc.