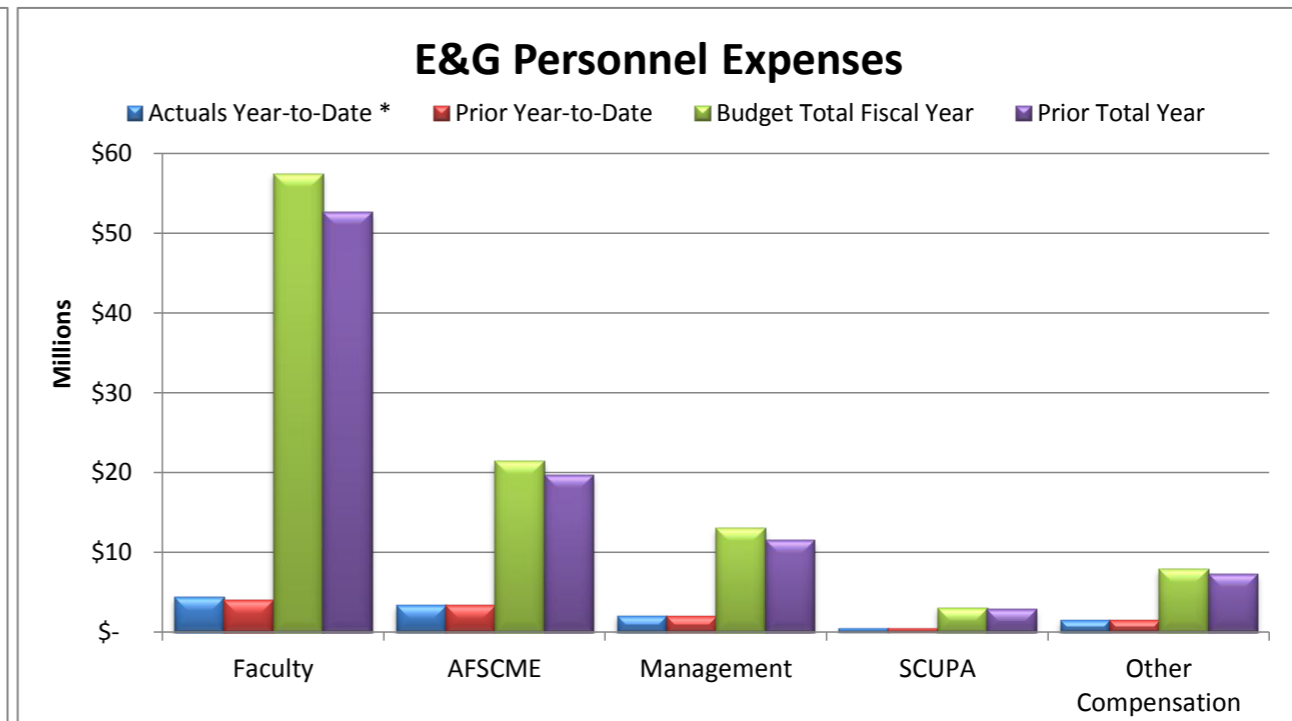
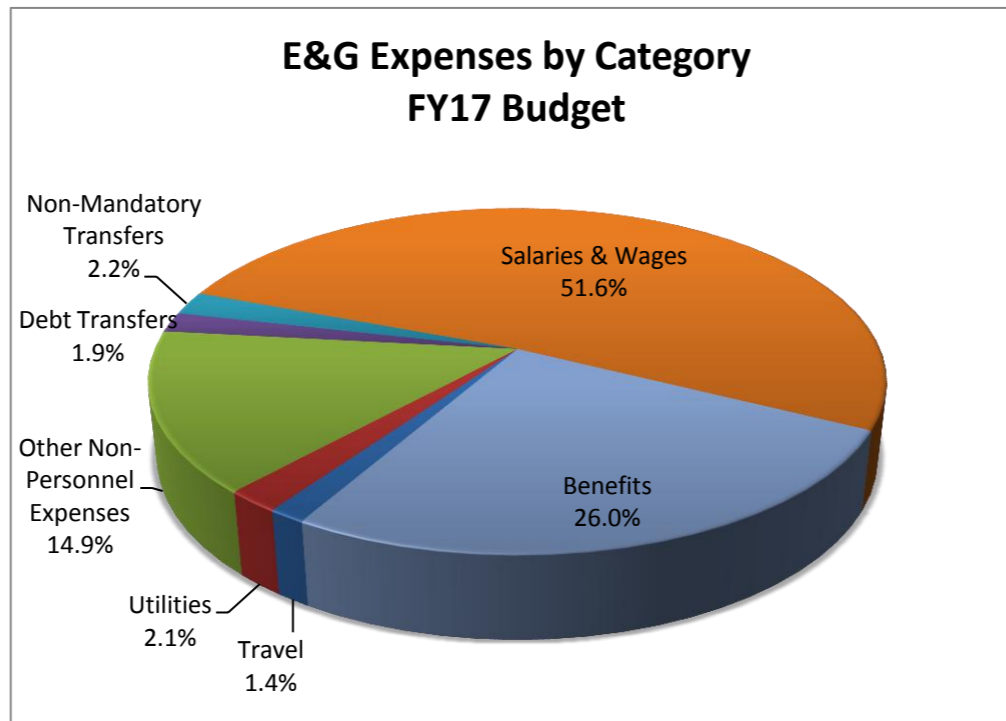
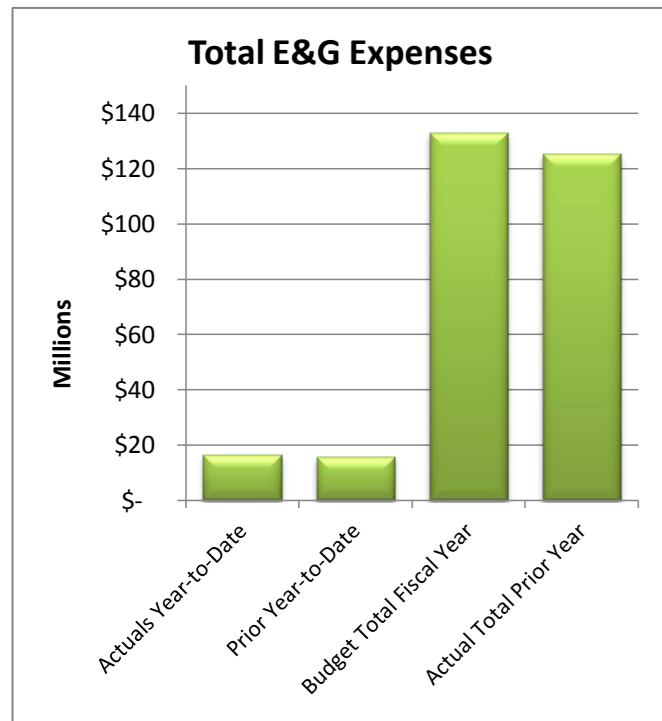
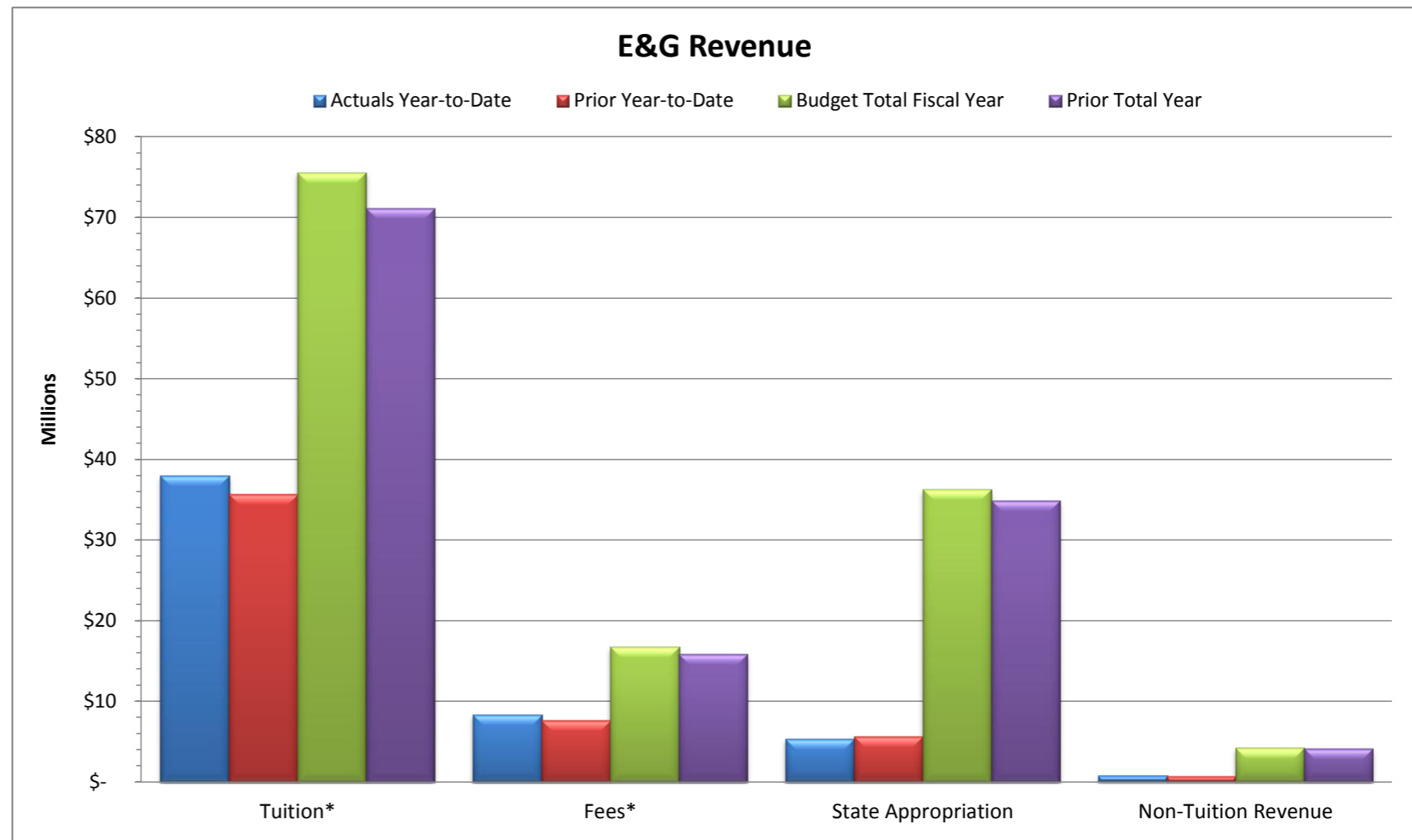


**Slippery Rock University**  
**Monthly Financial Report**  
**Aug-16**

<b>Total E&amp;G</b>				
<b>Selected Revenue &amp; Expenses</b>				
	<b>Budget</b>		<b>Actual</b>	
	<b>Fiscal Year</b>	<b>Year-to-Date</b>	<b>Year-to-Date</b>	<b>% of Budget</b>
	<b>2016-17</b>	<b>2016-17</b>		
<b>Revenue:</b>				
Tuition*	\$ 75,618,828	\$ 38,009,370		50%
Fees*	\$ 16,743,480	\$ 8,321,526		50%
State Appropriation	\$ 36,240,412	\$ 5,331,892		15%
Non-Tuition Revenue	\$ 4,245,074	\$ 778,583		18%
<b>Total Revenue</b>	<b>\$ 132,847,794</b>	<b>\$ 52,441,371</b>		<b>39%</b>
<b>Expenses:</b>				
Personnel Related	\$ 103,040,669	\$ 11,858,412		12%
<b>Non-Personnel Costs:</b>				
Travel	\$ 1,862,503	\$ 172,836		9%
Utilities	\$ 2,728,138	\$ 427,865		16%
Other Non-Personnel Expenses	\$ 19,834,141	\$ 4,037,492		20%
Mandatory Transfers (Debt)	\$ 2,462,994	\$ -		0%
Non-Mandatory Transfers	\$ 2,919,349	\$ -		0%
<b>Total Expenses</b>	<b>\$ 132,847,794</b>	<b>\$ 16,496,605</b>		<b>12%</b>
<b>Net Surplus/(Deficit/Use of Reserves)</b>	<b>\$ -</b>	<b>\$ 35,944,767</b>		

\*Tuition & Fee revenue is recorded/recognized in advance of many of the corresponding expenses



**Notes:**  
As of August 31, 2016 - 16.7% of the fiscal year has passed and 83.3% of the fiscal year remains. Note that revenue and several expense categories are not recognized evenly throughout the year.

Revenue:

Revenue - Tuition Revenue as of August 31, 2016 includes tuition and fees billing for Fall and billing for Summer Session II. Tuition and fees will continue to adjust as the semester approaches census day and throughout the end of the semester.

Non-tuition revenue consists of interest income, rental of facilities, cell tower reimbursement, ID card fee, transcript fee, ticket sales, parking decals & tickets, Pepsi funding.

Expenses:

Payroll expenditures include personnel expenditures through August, 2016.

Personnel costs are not incurred evenly throughout the year, but rather follow the established pay schedules.

Other Non-personnel expenses include such costs as equipment and furnishings, scholarships, library costs, contracted services, advertising, software license fees, maintenance/office supplies, bad debt expense, software, etc.