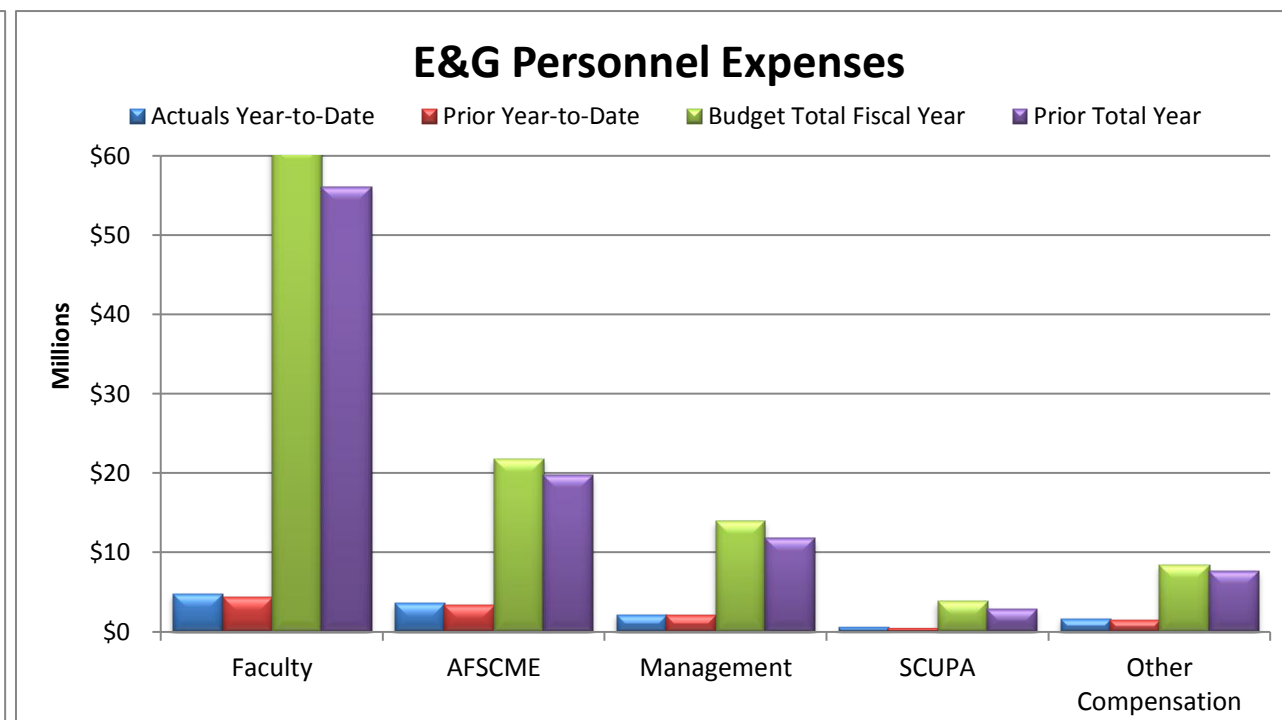
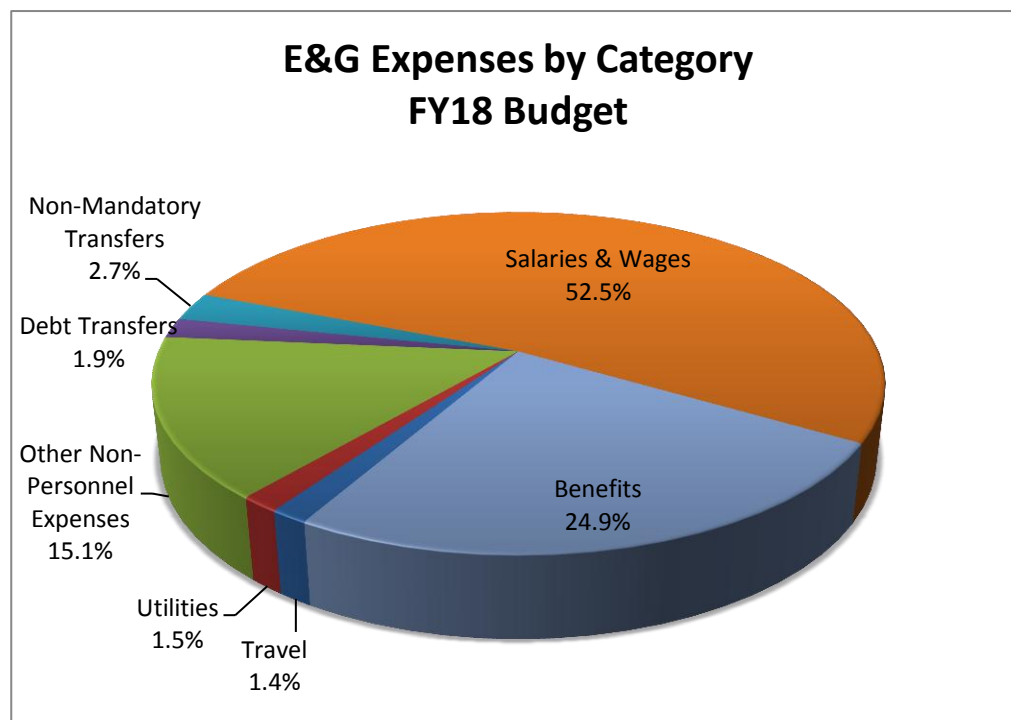
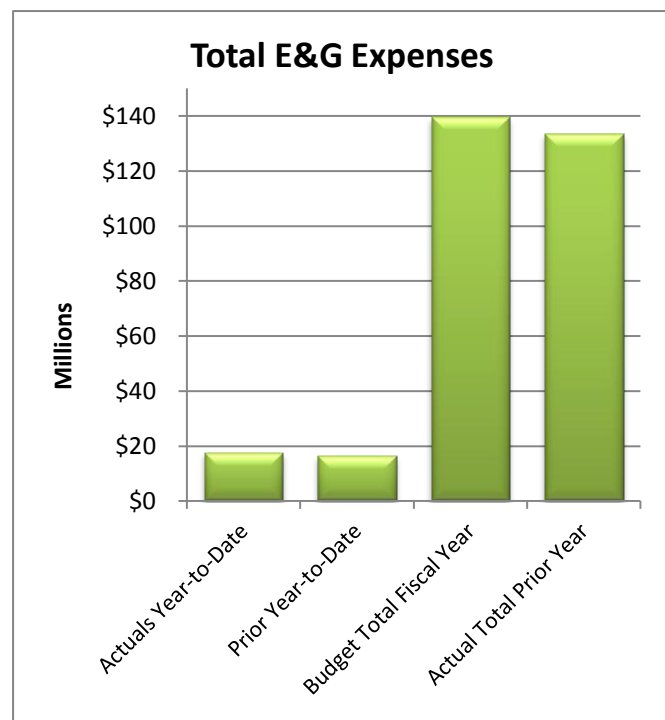
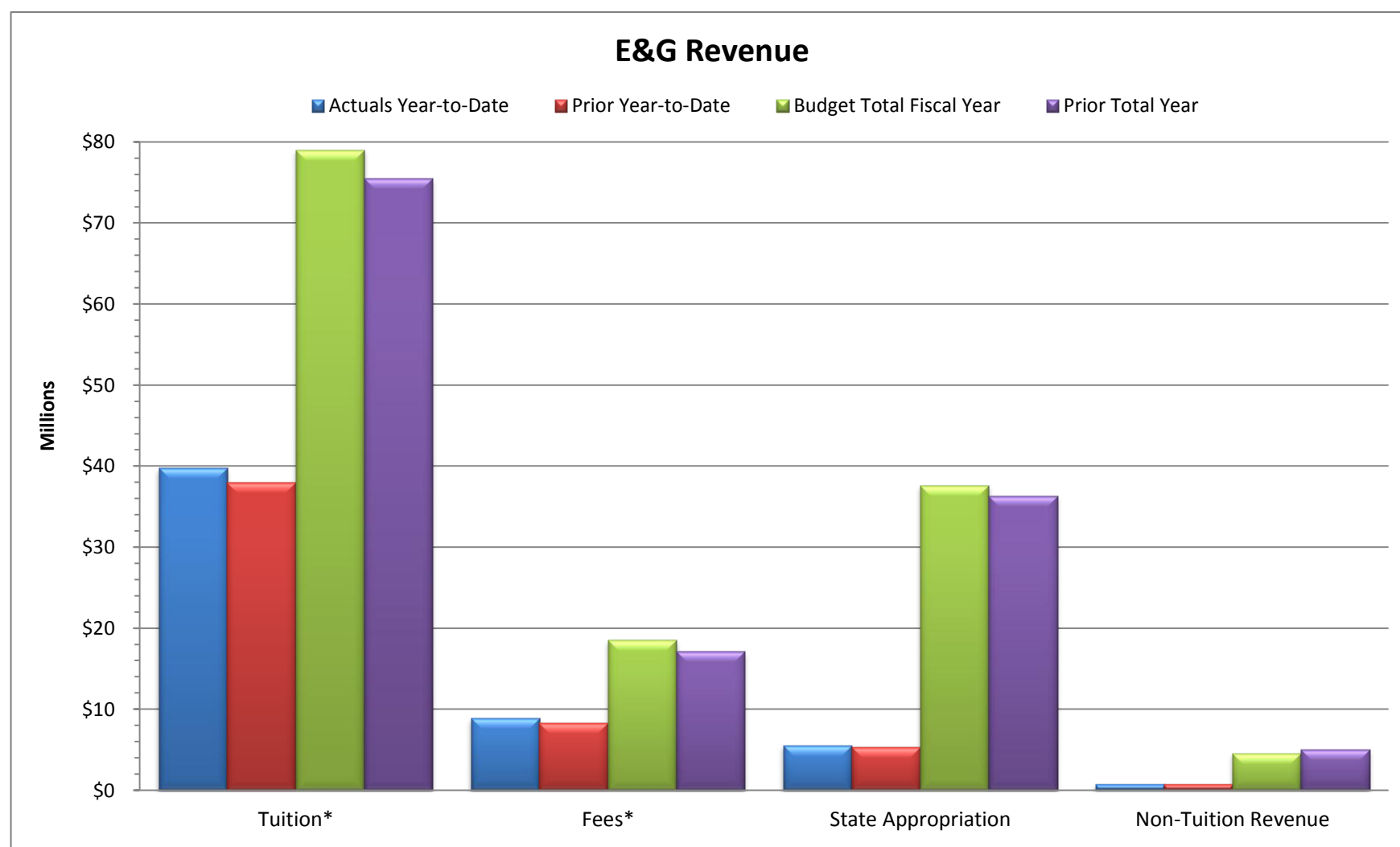


Slippery Rock University
Monthly Financial Report
Fiscal Year 2017/18 through August 31, 2017

Total E&G Selected Revenue & Expenses			
	Budget Fiscal Year 2017-18	Actual Year-to-Date 2017-18	% of Budget
Revenue:			
Tuition*	\$79,014,872	\$39,754,994	50%
Fees*	\$18,485,656	\$8,864,799	48%
State Appropriation	\$37,628,973	\$5,540,990	15%
Non-Tuition Revenue	\$4,595,221	\$747,804	16%
Total Revenue	\$139,724,722	\$54,908,587	39%
Expenses:			
Personnel Related	\$108,106,626	\$12,867,204	12%
Non-Personnel Costs:			
Travel	\$2,012,189	\$177,824	9%
Utilities	\$2,107,287	\$364,908	17%
Other Non-Personnel Expenses	\$21,136,850	\$4,218,546	20%
Mandatory Transfers (Debt)	\$2,598,239	\$0	0%
Non-Mandatory Transfers	\$3,763,531	\$0	0%
Total Expenses	\$139,724,722	\$17,628,482	13%
Net Surplus/(Deficit/Use of Reserves)	\$0	\$37,280,104	

*Tuition & Fee revenue is recorded/recognized in advance of many of the corresponding expenses



Notes:

As of August 31, 2017, 16.7% of the fiscal year has passed and 83.3% remains. Note that revenue and several expense categories are not recognized evenly throughout the year.

Revenue:

Revenue - Tuition and fee revenue as of August 31, 2017 includes billings for Fall 2017 and the second session of Summer 2017. Tuition and fees for the fall will continue to adjust to through the end of the fiscal year, June 30, 2018.

Non-tuition revenue consists of interest income, rental of facilities, cell tower reimbursement, ID card fee, transcript fee, ticket sales, parking decals & tickets, Pepsi funding.

Expenses:

Personnel costs are not incurred evenly throughout the year, but rather follow the established pay schedules.

Other Non-personnel expenses include such costs as equipment and furnishings, scholarships, library costs, contracted services, advertising, software license fees, maintenance/office supplies, bad debt expense, software, etc.