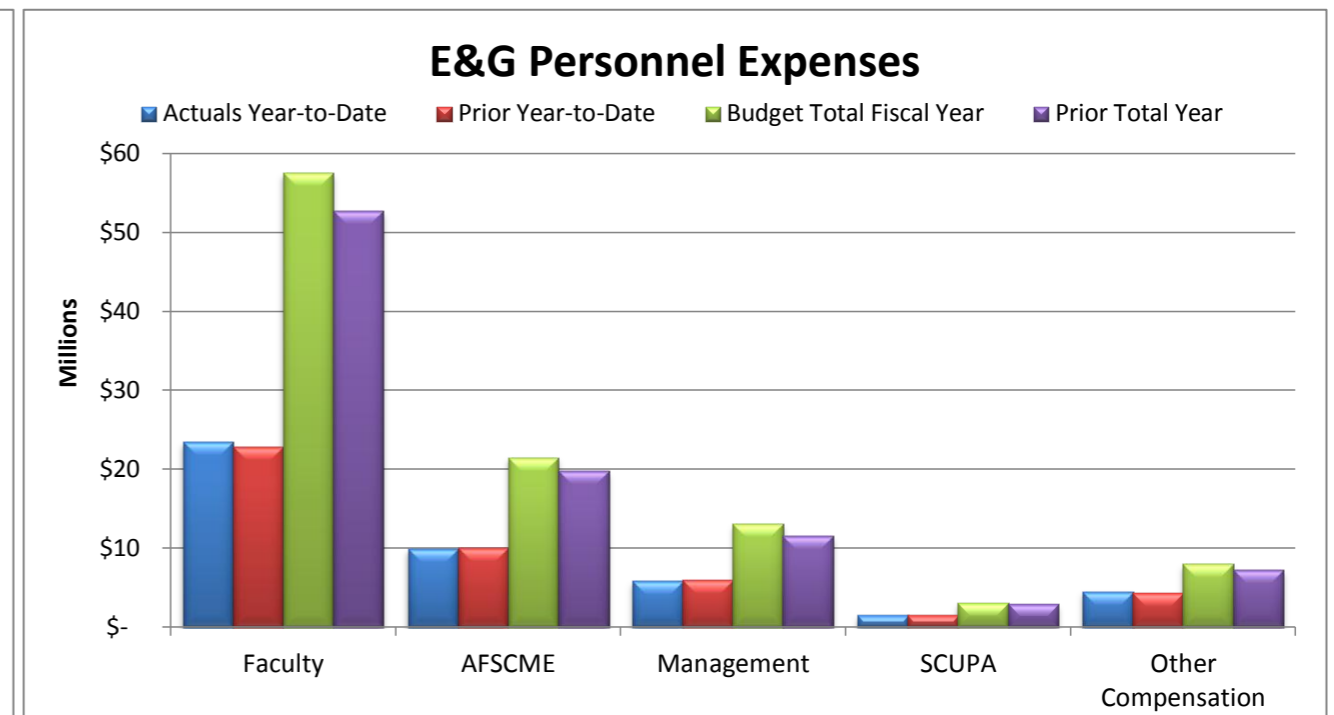
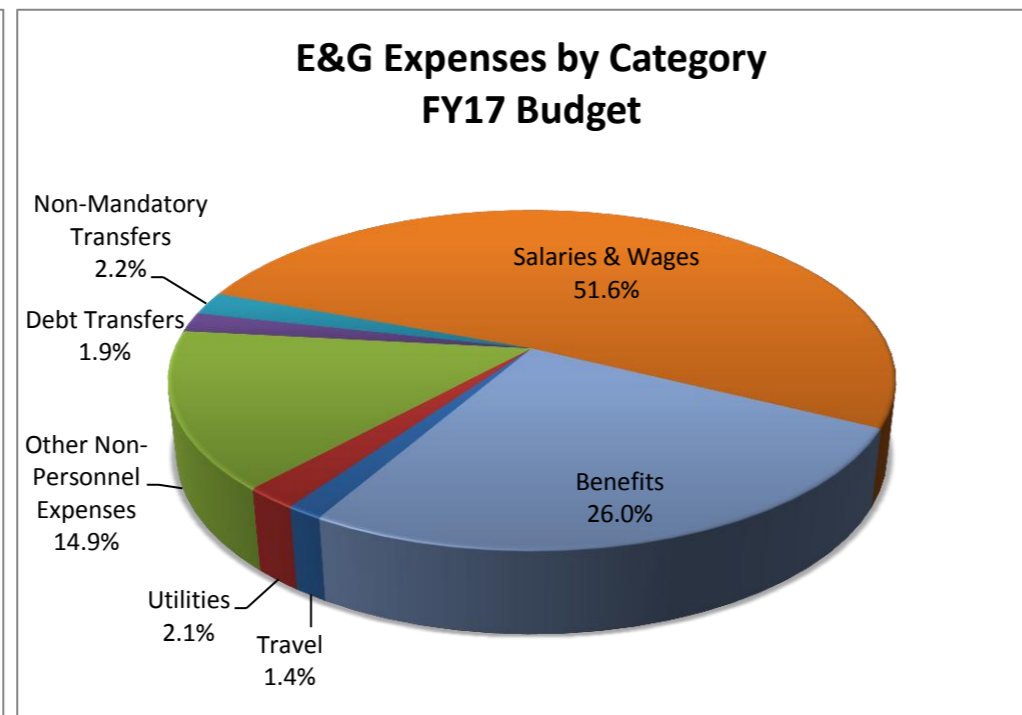
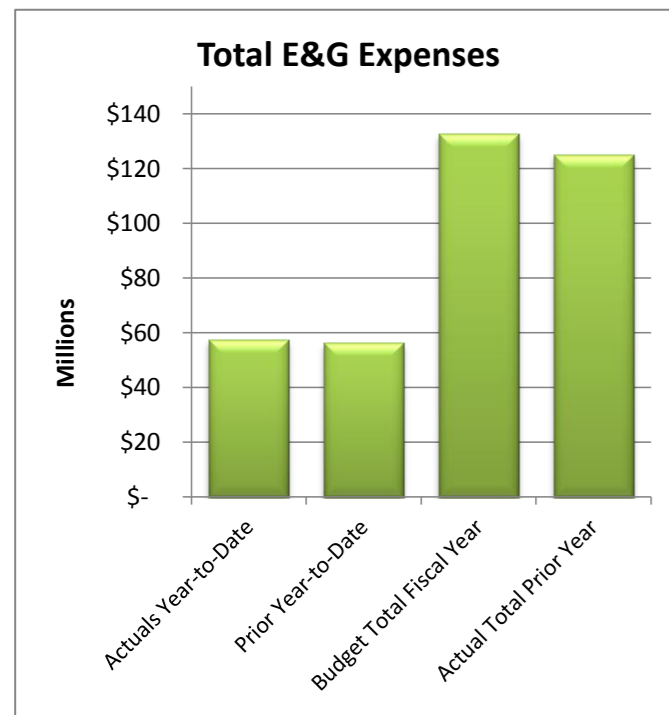
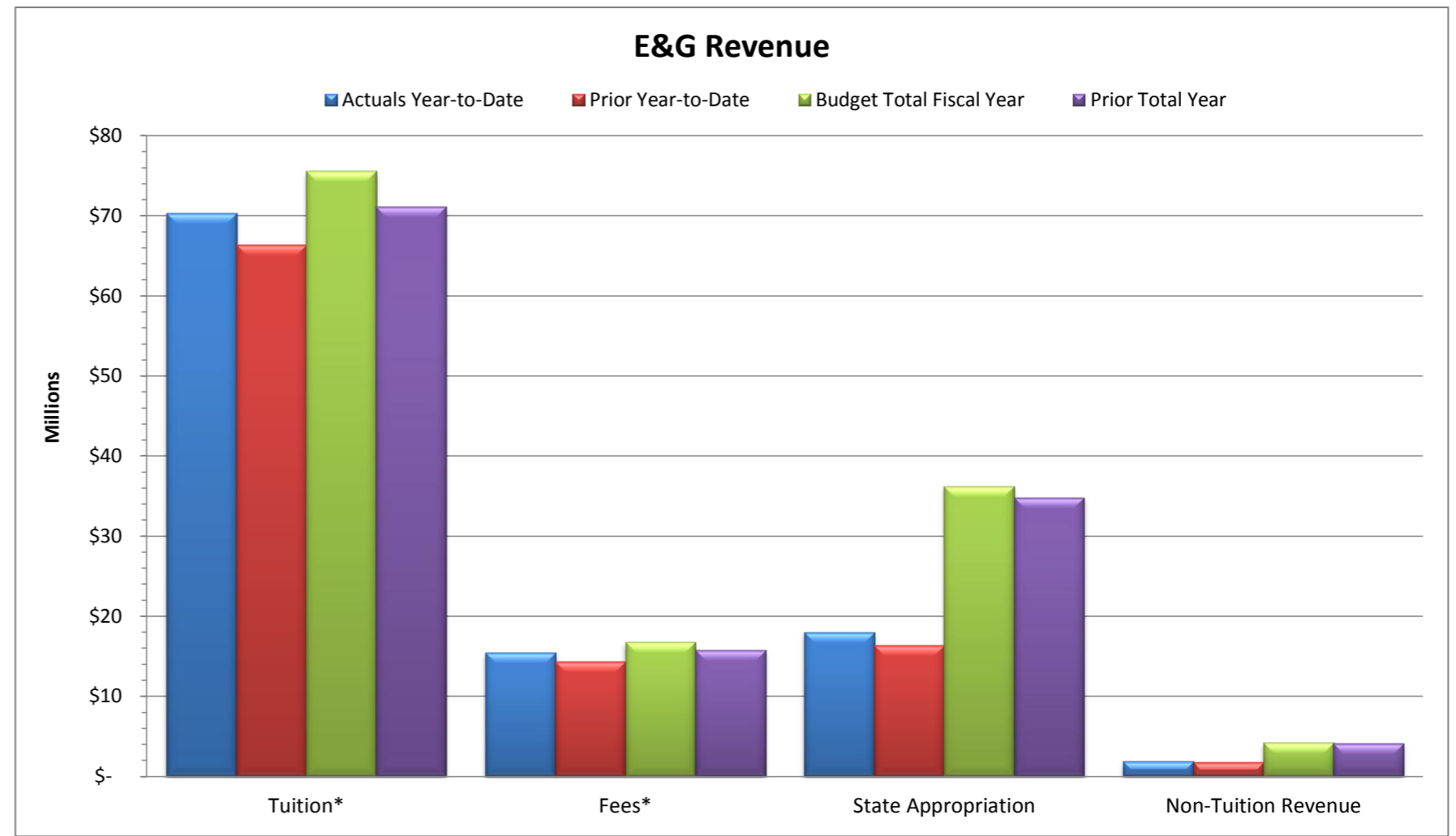


Total E&G Selected Revenue & Expenses			
	Budget Fiscal Year 2016-17	Actual Year-to-Date 2016-17	% of Budget
Revenue:			
Tuition*	\$ 75,618,828	\$ 70,338,892	93%
Fees*	\$ 16,743,480	\$ 15,490,357	93%
State Appropriation	\$ 36,240,412	\$ 17,965,818	50%
Non-Tuition Revenue	\$ 4,245,074	\$ 1,893,372	45%
Total Revenue	\$ 132,847,794	\$ 105,688,439	80%
Expenses:			
Personnel Related	\$ 103,040,669	\$ 45,141,848	44%
Non-Personnel Costs:			
Travel	\$ 1,862,503	\$ 820,871	44%
Utilities	\$ 2,728,138	\$ 1,423,205	52%
Other Non-Personnel Expenses	\$ 19,834,141	\$ 9,994,888	50%
Mandatory Transfers (Debt)	\$ 2,462,994	\$ -	0%
Non-Mandatory Transfers	\$ 2,919,349	\$ 0	0%
Total Expenses	\$ 132,847,794	\$ 57,380,812	43%
Net Surplus/(Deficit/Use of Reserves)	\$ -	\$ 48,307,627	

*Tuition & Fee revenue is recorded/recognized in advance of many of the corresponding expenses



Notes:

As of December 31, 2016 - 50.0% of the fiscal year has passed. Note that revenue and several expense categories are not recognized evenly throughout the year.

Revenue:

Revenue - Tuition Revenue as of December 31, 2016 includes tuition and fees billing for Fall, Spring, Winter and Summer Session II. Tuition and fees for Winter and Spring will continue to adjust throughout the end of the Spring semester.

Non-tuition revenue consists of interest income, rental of facilities, cell tower reimbursement, ID card fee, transcript fee, ticket sales, parking decals & tickets, Pepsi funding.

Last year at this time, State Appropriations were accrued including a portion of the performance funding amount.

Expenses:

Personnel costs are not incurred evenly throughout the year, but rather follow the established pay schedules.

Other Non-personnel expenses include such costs as equipment and furnishings, scholarships, library costs, contracted services, advertising, software license fees, maintenance/office supplies, bad debt expense, software, etc.