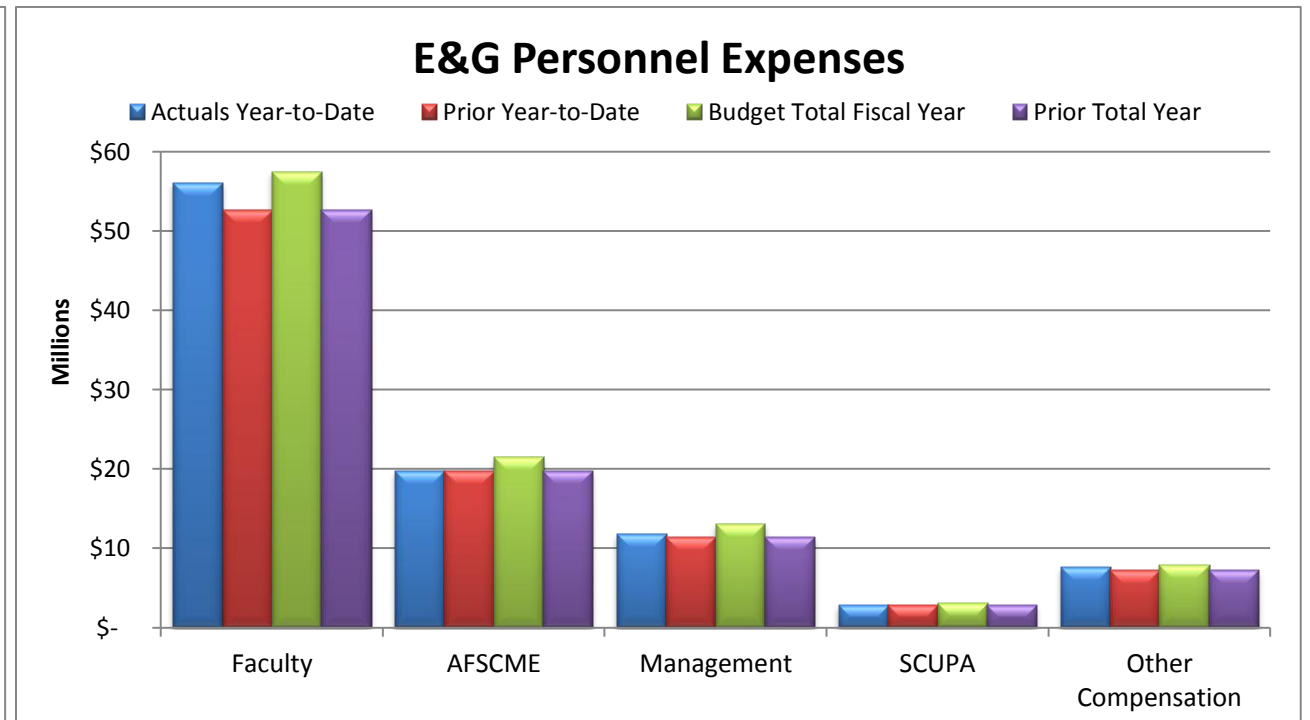
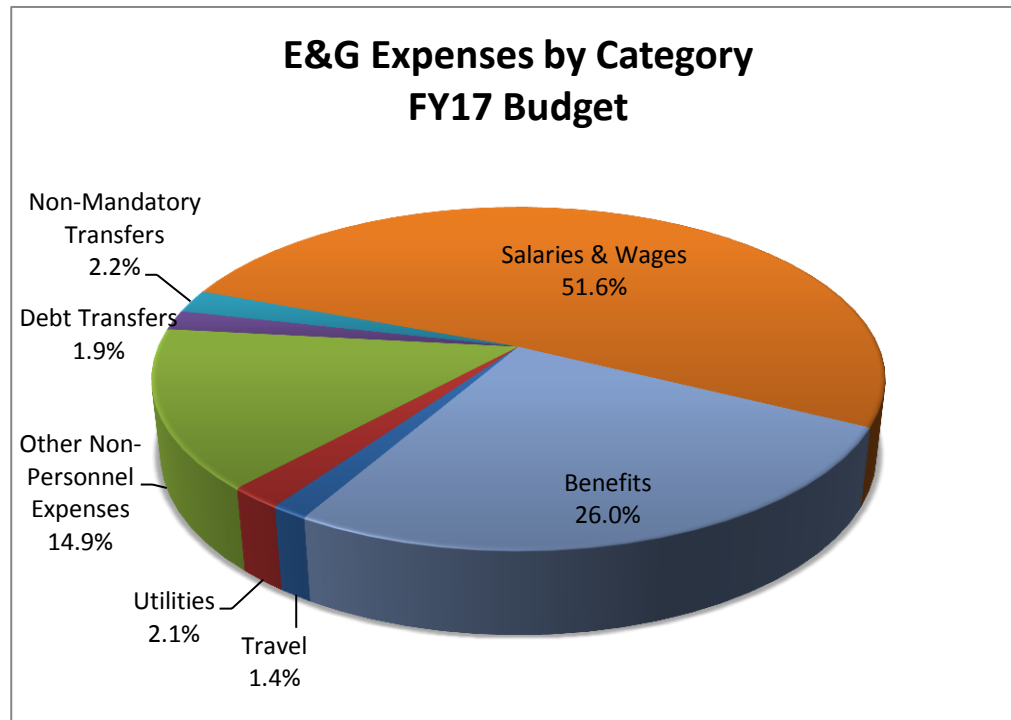
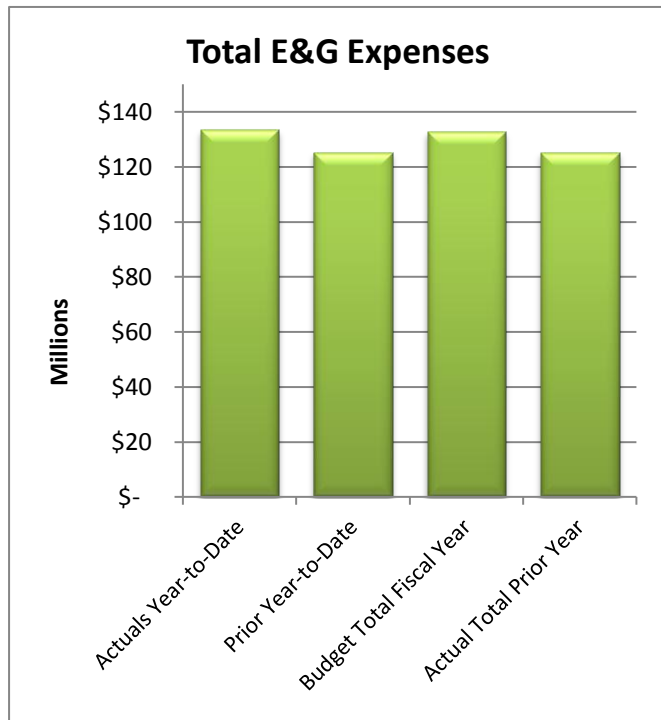
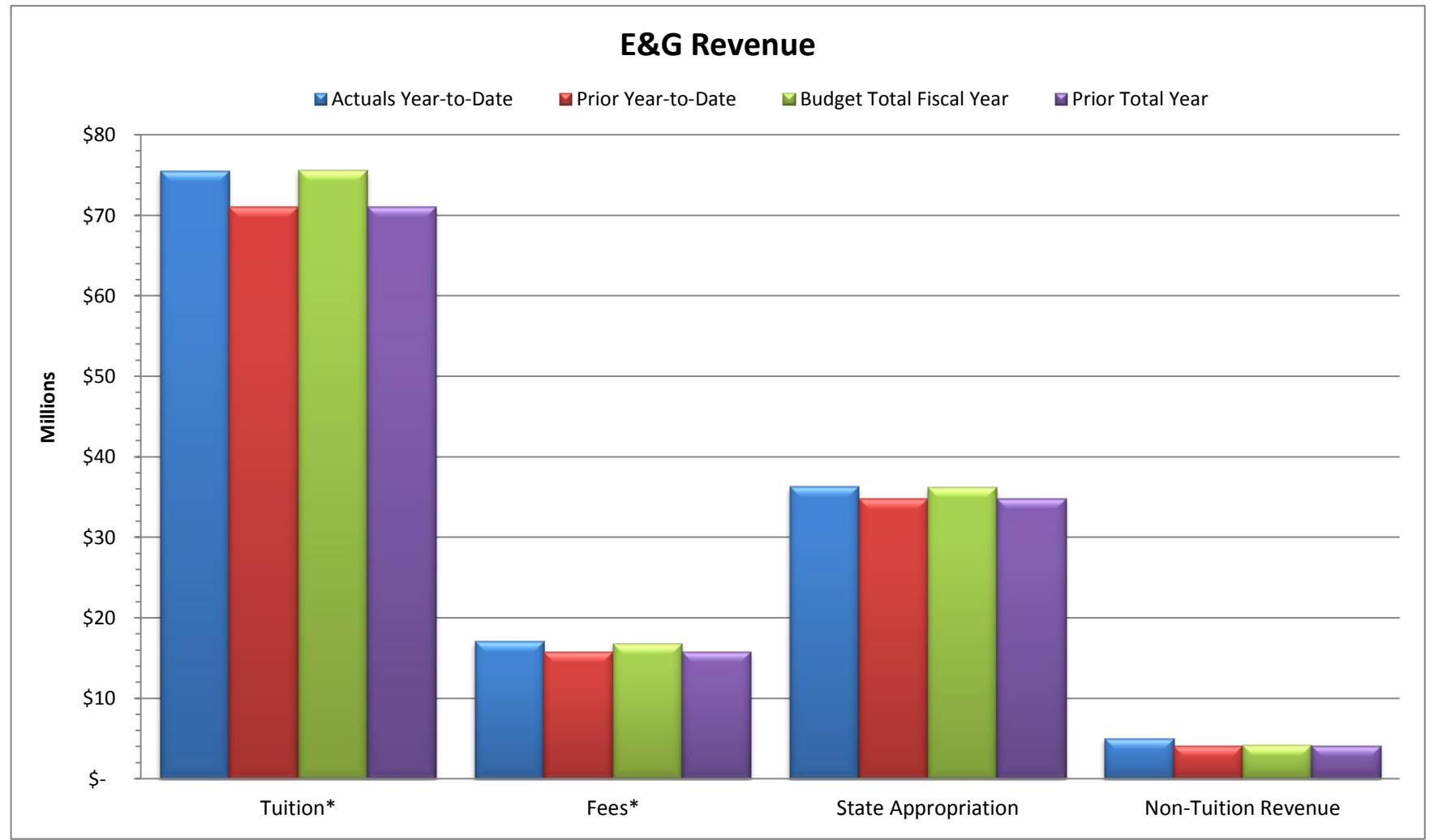


**Slippery Rock University
Monthly Financial Report
June-17**

Total E&G Selected Revenue & Expenses				
	Budget Fiscal Year <u>2016-17</u>	Actual Year-to-Date <u>2016-17</u>	% of Budget	
Revenue:				
Tuition*	\$ 75,618,828	\$ 75,517,983	100%	
Fees*	\$ 16,743,480	\$ 17,116,486	102%	
State Appropriation	\$ 36,240,412	\$ 36,357,561	100%	
Non-Tuition Revenue	\$ 4,245,074	\$ 5,066,475	119%	
Total Revenue	\$ 132,847,794	\$ 134,058,505	101%	
Expenses:				
Personnel Related	\$ 103,040,669	\$ 98,178,753	95%	
Non-Personnel Costs:				
Travel	\$ 1,862,503	\$ 1,972,734	106%	
Utilities	\$ 2,728,138	\$ 2,852,773	105%	
Other Non-Personnel Expenses	\$ 19,834,141	\$ 20,135,239	102%	
Mandatory Transfers (Debt)	\$ 2,462,994	\$ 1,878,322	76%	
Non-Mandatory Transfers	\$ 2,919,349	\$ 8,513,394	292%	
Total Expenses	\$ 132,847,794	\$ 133,531,216	101%	
Net Surplus/(Deficit/Use of Reserves)	\$ -	\$ 527,289		

*Tuition & Fee revenue is recorded/recognized in advance of many of the corresponding expenses



Notes:
June 30, 2017 is the end of the fiscal year. Note that revenue and several expense categories are not recognized evenly throughout the year.

Revenue:
Revenue - Tuition and fee revenue as of June 30, 2017 includes billings for the academic year and intersession.
Non-tuition revenue consists of interest income, rental of facilities, cell tower reimbursement, ID card fee, transcript fee, ticket sales, parking decals & tickets, Pepsi funding.

Expenses:
Personnel costs are not incurred evenly throughout the year, but rather follow the established pay schedules.
Other Non-personnel expenses include such costs as equipment and furnishings, scholarships, library costs, contracted services, advertising, software license fees, maintenance/office supplies, bad debt expense, software, etc.