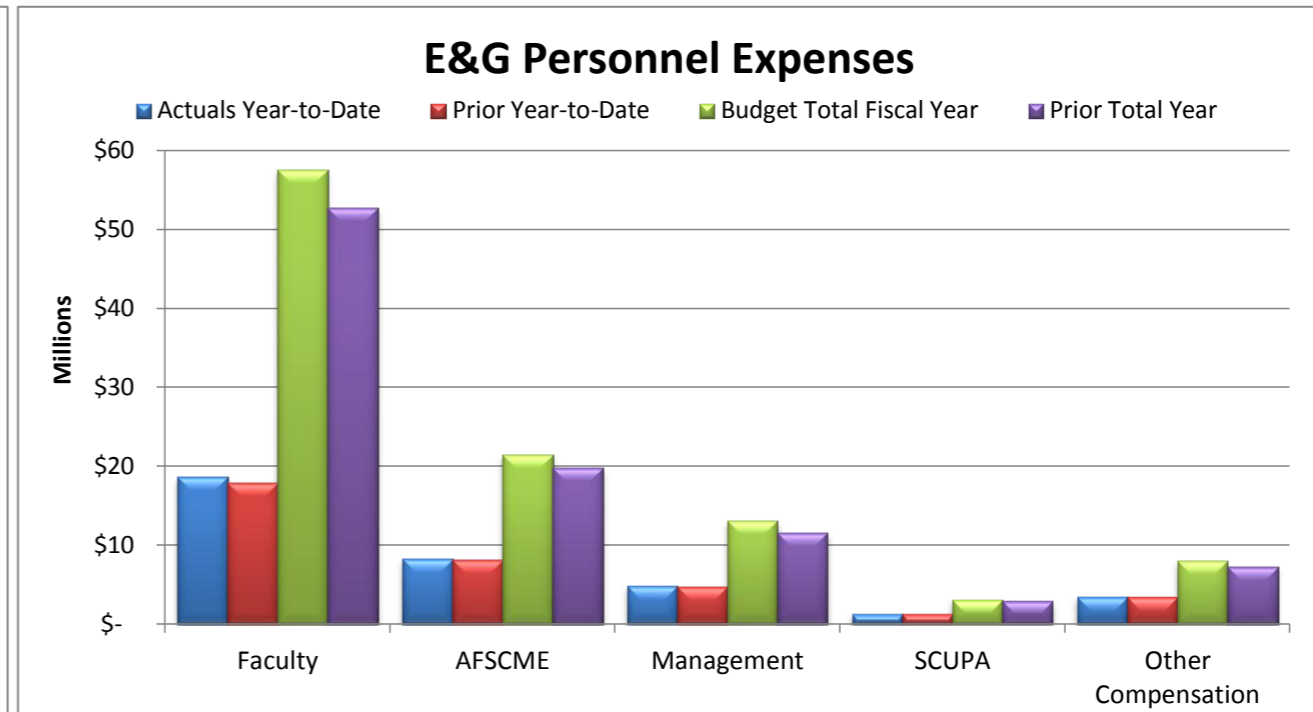
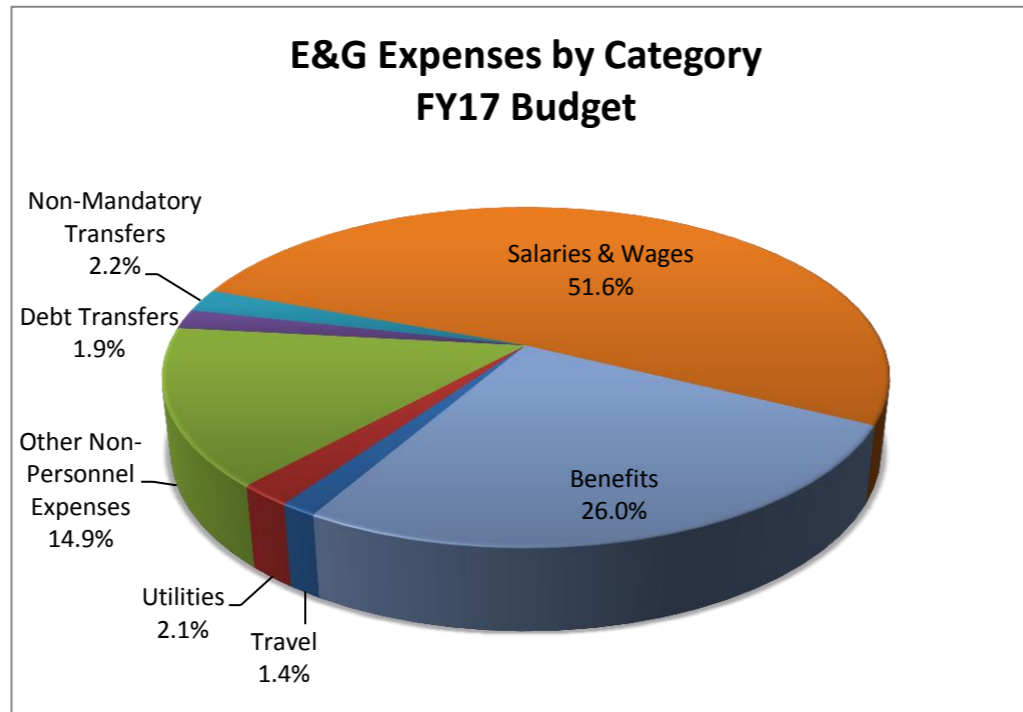
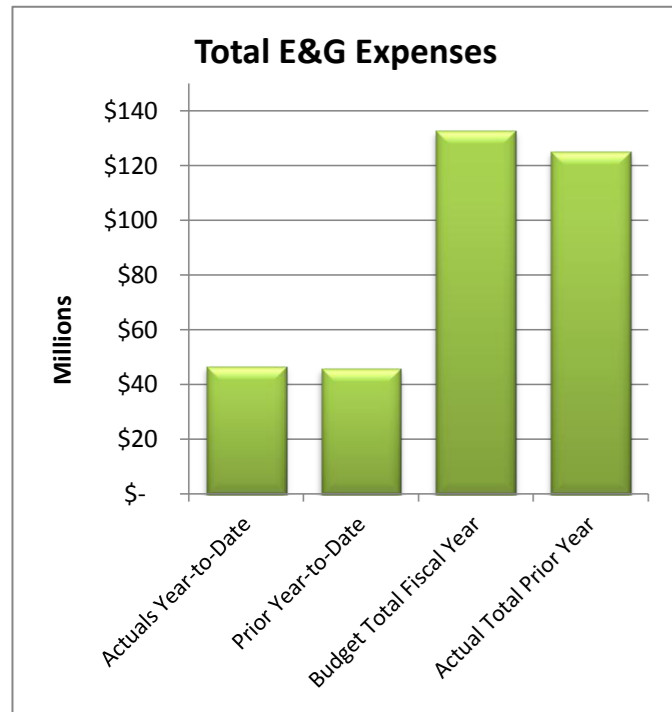
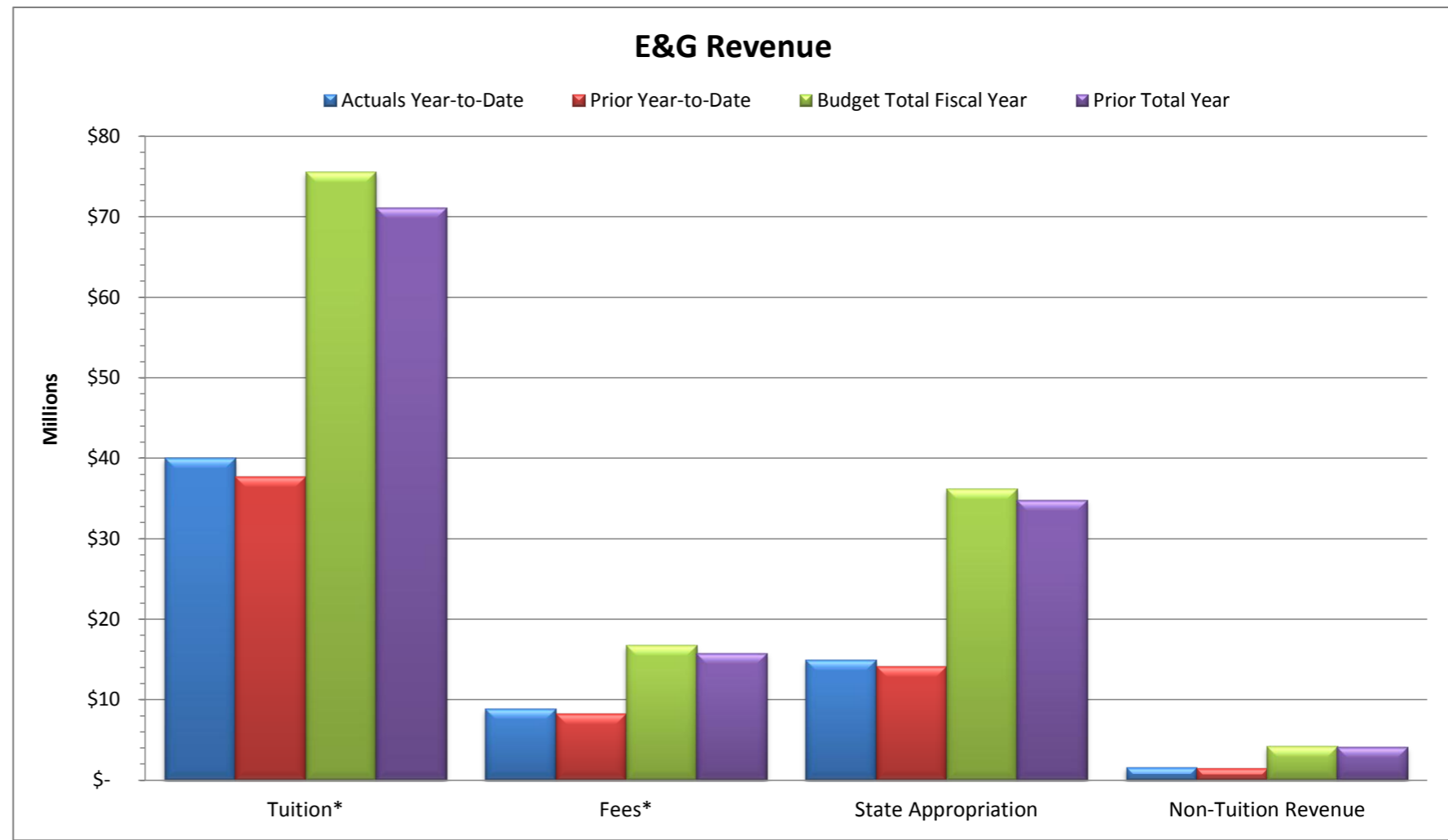


Total E&G Selected Revenue & Expenses				
	Budget Fiscal Year 2016-17	Actual Year-to-Date 2016-17	% of Budget	
Revenue:				
Tuition*	\$ 75,618,828	\$ 40,073,923	53%	
Fees*	\$ 16,743,480	\$ 8,902,457	53%	
State Appropriation	\$ 36,240,412	\$ 14,971,515	41%	
Non-Tuition Revenue	\$ 4,245,074	\$ 1,616,090	38%	
Total Revenue	\$ 132,847,794	\$ 65,563,985	49%	
Expenses:				
Personnel Related	\$ 103,040,669	\$ 36,331,940	35%	
Non-Personnel Costs:				
Travel	\$ 1,862,503	\$ 669,776	36%	
Utilities	\$ 2,728,138	\$ 1,150,133	42%	
Other Non-Personnel Expenses	\$ 19,834,141	\$ 8,400,707	42%	
Mandatory Transfers (Debt)	\$ 2,462,994	\$ -	0%	
Non-Mandatory Transfers	\$ 2,919,349	\$ -	0%	
Total Expenses	\$ 132,847,794	\$ 46,552,556	35%	
Net Surplus/(Deficit/Use of Reserves)	\$ -	\$ 19,011,429		

*Tuition & Fee revenue is recorded/recognized in advance of many of the corresponding expenses



Notes:
 As of November 30, 2016 - 41.7% of the fiscal year has passed and 58.3% of the year remains. Note that revenue and several expense categories are not recognized evenly throughout the year.

Revenue:

Revenue - Tuition Revenue as of November 30, 2016 includes tuition and fees billing for Fall, Summer Session II and the first billing for Winter session. Tuition and fees will continue to adjust throughout the end of the Spring semester.

Non-tuition revenue consists of interest income, rental of facilities, cell tower reimbursement, ID card fee, transcript fee, ticket sales, parking decals & tickets, Pepsi funding.

Last year at this time, State Appropriations were accrued including a portion of the performance funding amount.

Expenses:

Personnel costs are not incurred evenly throughout the year, but rather follow the established pay schedules.

Other Non-personnel expenses include such costs as equipment and furnishings, scholarships, library costs, contracted services, advertising, software license fees, maintenance/office supplies, bad debt expense, software, etc.