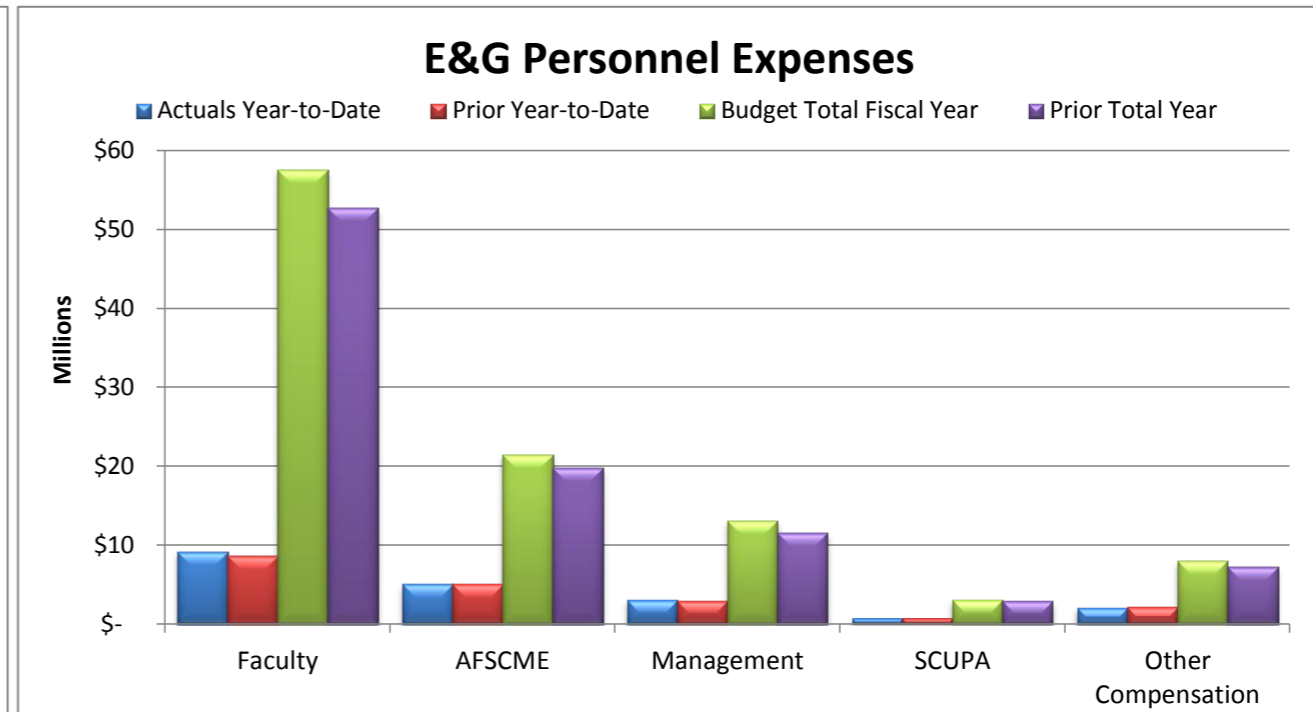
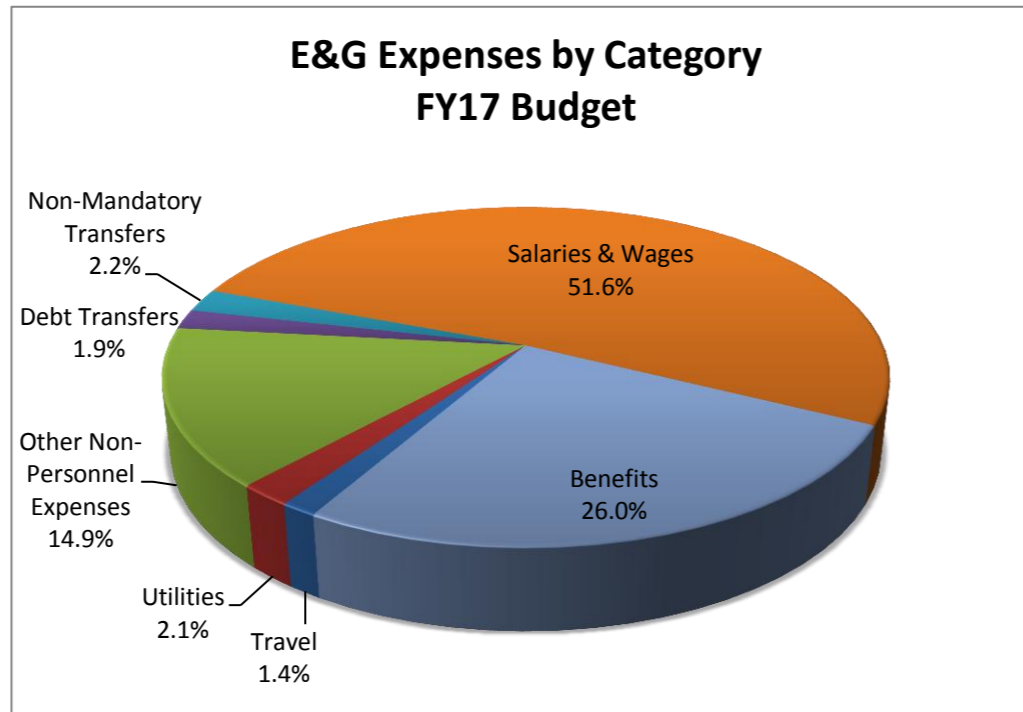
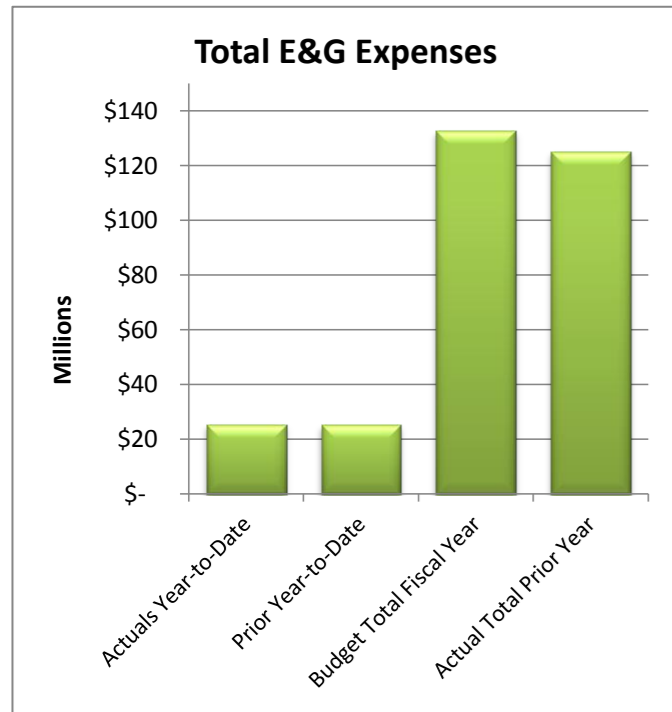
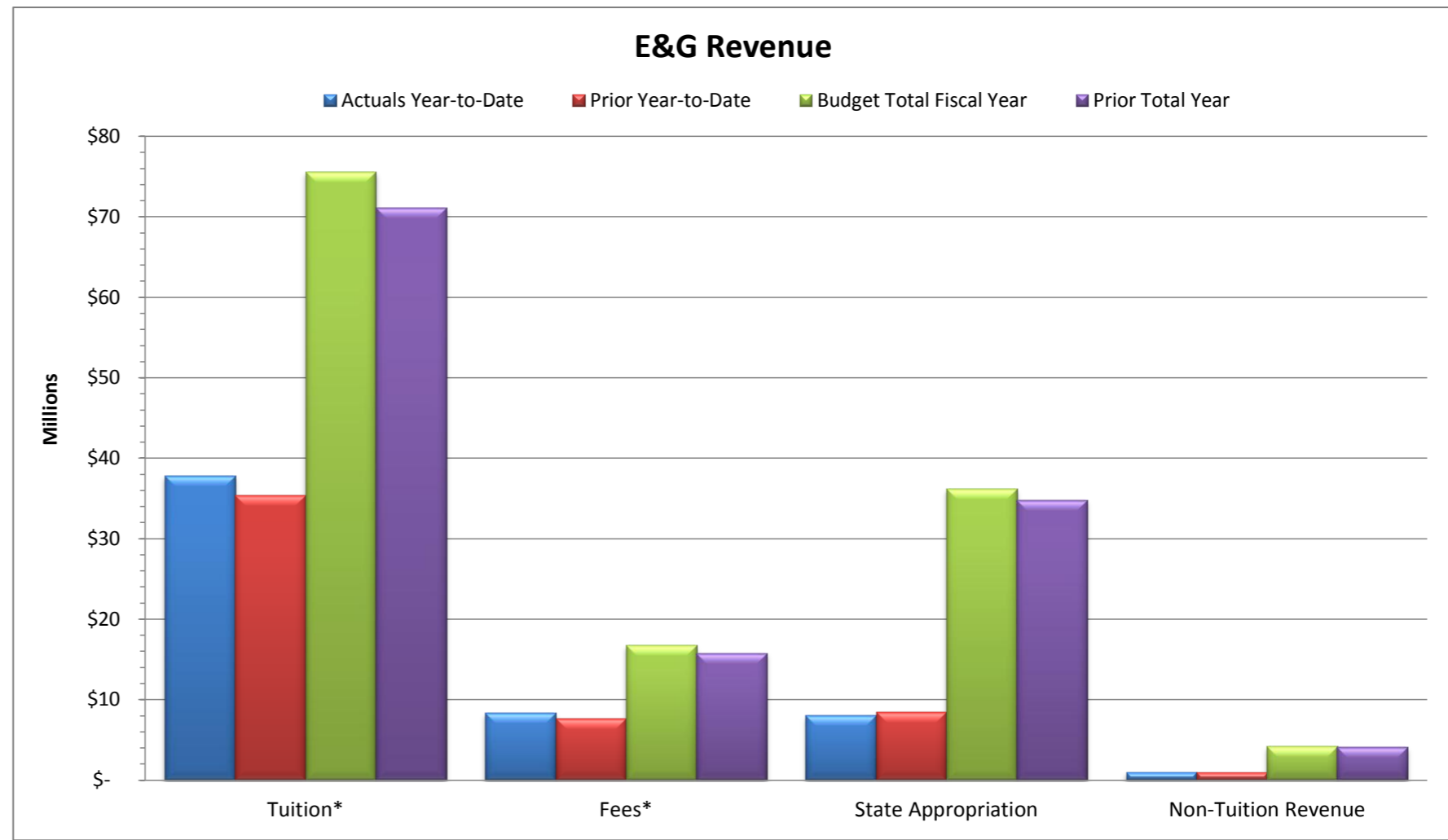


Total E&G Selected Revenue & Expenses				
	Budget Fiscal Year 2016-17	Actual Year-to-Date 2016-17	% of Budget	
Revenue:				
Tuition*	\$ 75,618,828	\$ 37,881,410	50%	
Fees*	\$ 16,743,480	\$ 8,388,359	50%	
State Appropriation	\$ 36,240,412	\$ 7,997,838	22%	
Non-Tuition Revenue	\$ 4,245,074	\$ 1,040,941	25%	
Total Revenue	\$ 132,847,794	\$ 55,308,547	42%	
Expenses:				
Personnel Related	\$ 103,040,669	\$ 19,984,322	19%	
Non-Personnel Costs:				
Travel	\$ 1,862,503	\$ 286,153	15%	
Utilities	\$ 2,728,138	\$ 696,050	26%	
Other Non-Personnel Expenses	\$ 19,834,141	\$ 4,452,531	22%	
Mandatory Transfers (Debt)	\$ 2,462,994	\$ -	0%	
Non-Mandatory Transfers	\$ 2,919,349	\$ -	0%	
Total Expenses	\$ 132,847,794	\$ 25,419,056	19%	
Net Surplus/(Deficit/Use of Reserves)	\$ -	\$ 29,889,491		

*Tuition & Fee revenue is recorded/recognized in advance of many of the corresponding expenses



Notes:
 As of September 30, 2016 - 25.0% of the fiscal year has passed and 75.0% of the fiscal year remains. Note that revenue and several expense categories are not recognized evenly throughout the year.

Revenue:

Revenue - Tuition Revenue as of September 30, 2016 includes tuition and fees billing for Fall and billing for Summer Session II. Tuition and fees will continue to adjust as the semester approaches census day and throughout the end of the semester.

Non-tuition revenue consists of interest income, rental of facilities, cell tower reimbursement, ID card fee, transcript fee, ticket sales, parking decals & tickets, Pepsi funding.

Performance Funding has not been received as of September. Last year at this time, State Appropriations were accrued including a portion of the performance funding amount.

Expenses:

Personnel costs are not incurred evenly throughout the year, but rather follow the established pay schedules.

Other Non-personnel expenses include such costs as equipment and furnishings, scholarships, library costs, contracted services, advertising, software license fees, maintenance/office supplies, bad debt expense, software, etc.