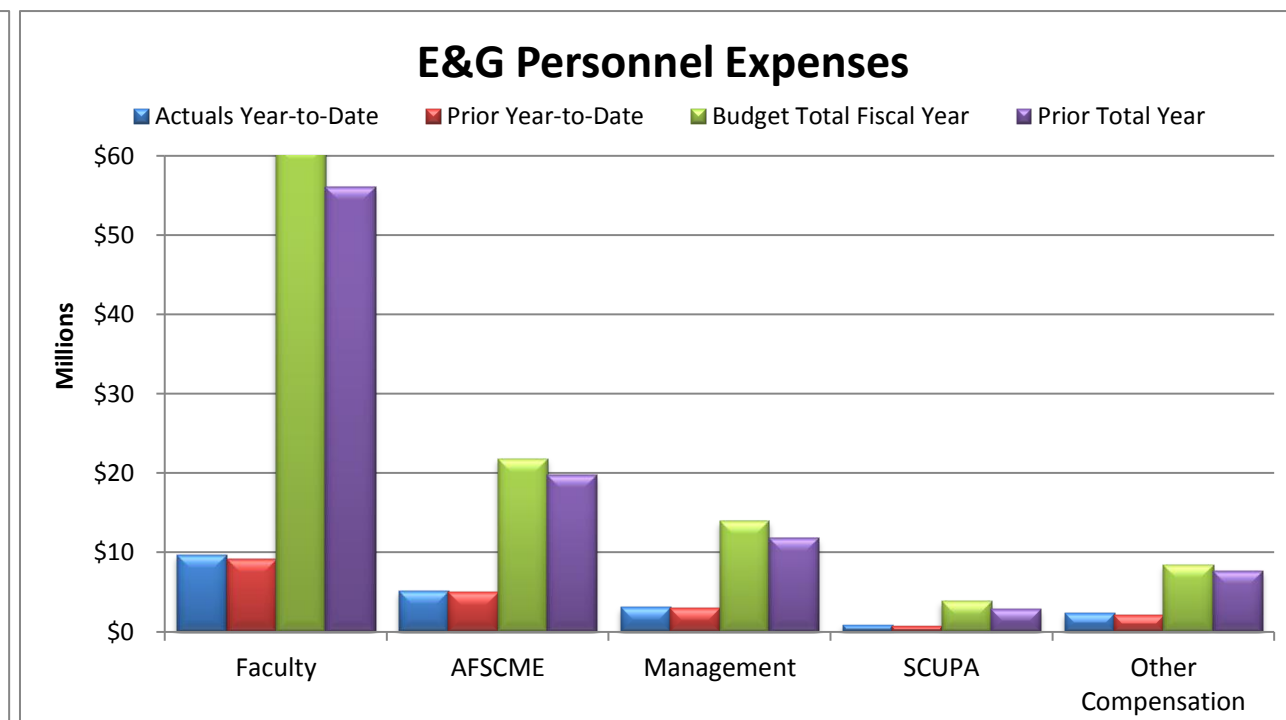
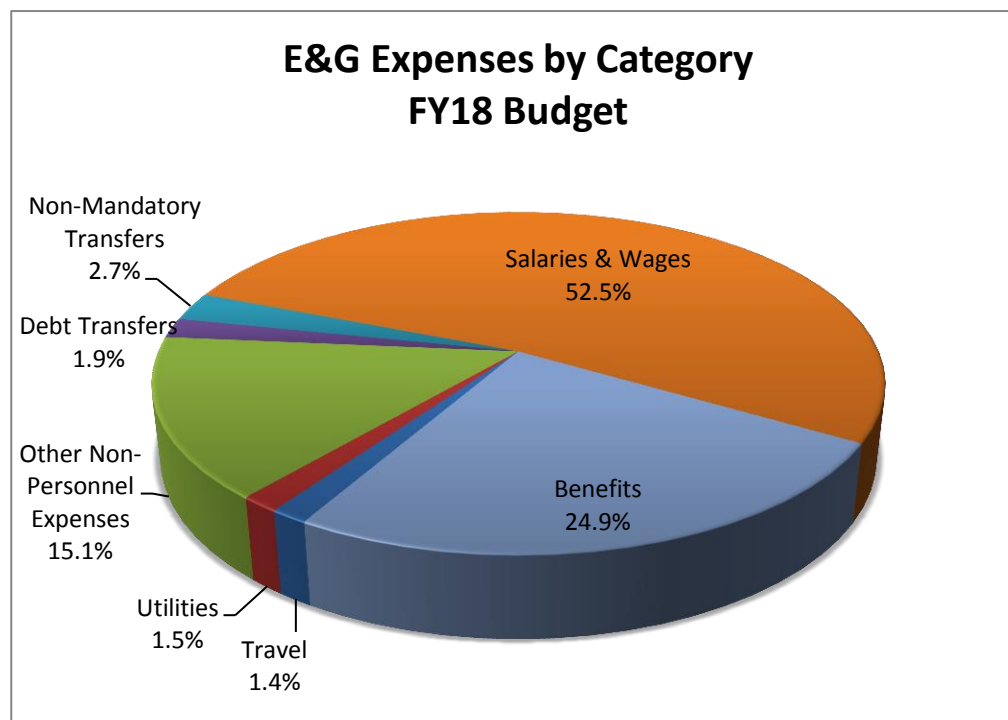
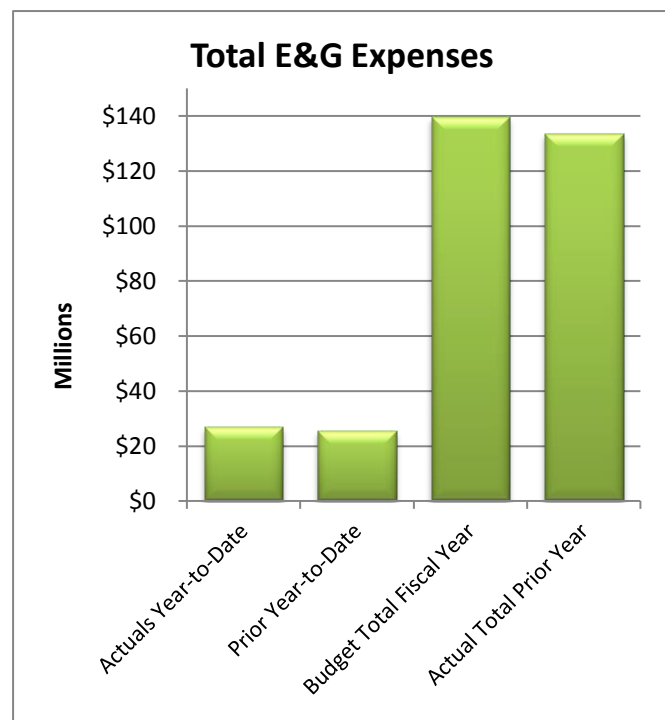
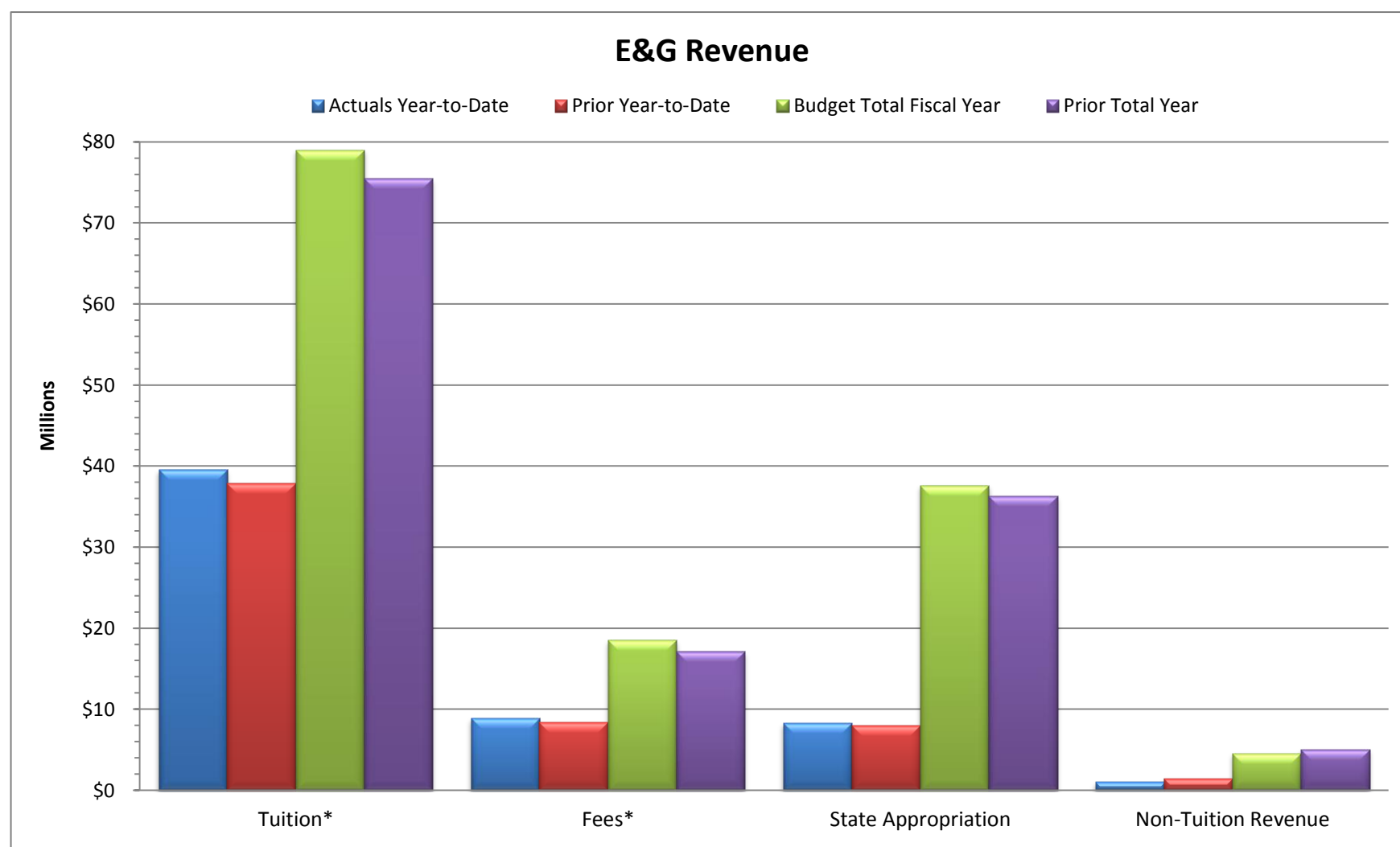


Slippery Rock University
Monthly Financial Report
Fiscal Year 2017/18 through September 30, 2017

Total E&G Selected Revenue & Expenses			
	Budget Fiscal Year 2017-18	Actual Year-to-Date 2017-18	% of Budget
Revenue:			
Tuition*	\$79,014,872	\$39,565,957	50%
Fees*	\$18,485,656	\$8,901,083	48%
State Appropriation	\$37,628,973	\$8,311,485	22%
Non-Tuition Revenue	\$4,595,221	\$1,067,396	23%
Total Revenue	\$139,724,722	\$57,845,922	41%
Expenses:			
Personnel Related	\$108,106,626	\$21,150,694	20%
Non-Personnel Costs:			
Travel	\$2,012,189	\$305,210	15%
Utilities	\$2,107,287	\$611,128	29%
Other Non-Personnel Expenses	\$21,136,850	\$4,754,922	22%
Mandatory Transfers (Debt)	\$2,598,239	\$0	0%
Non-Mandatory Transfers	\$3,763,531	\$94,459	3%
Total Expenses	\$139,724,722	\$26,916,413	19%
Net Surplus/(Deficit/Use of Reserves)	\$0	\$30,929,509	

*Tuition & Fee revenue is recorded/recognized in advance of many of the corresponding expenses



Notes:

As of September 30, 2017, 25.0% of the fiscal year has passed and 75.0% remains. Note that revenue and several expense categories are not recognized evenly throughout the year.

Revenue:

Revenue - Tuition and fee revenue as of September 30, 2017 includes billings for Fall 2017 and the second session of Summer 2017. Tuition and fees for the fall will continue to adjust to through the end of the fiscal year, June 30, 2018. Non-tuition revenue consists of interest income, rental of facilities, cell tower reimbursement, ID card fee, transcript fee, ticket sales, parking decals & tickets, Pepsi funding.

Expenses:

Personnel costs are not incurred evenly throughout the year, but rather follow the established pay schedules.

Other Non-personnel expenses include such costs as equipment and furnishings, scholarships, library costs, contracted services, advertising, software license fees, maintenance/office supplies, bad debt expense, software, etc.