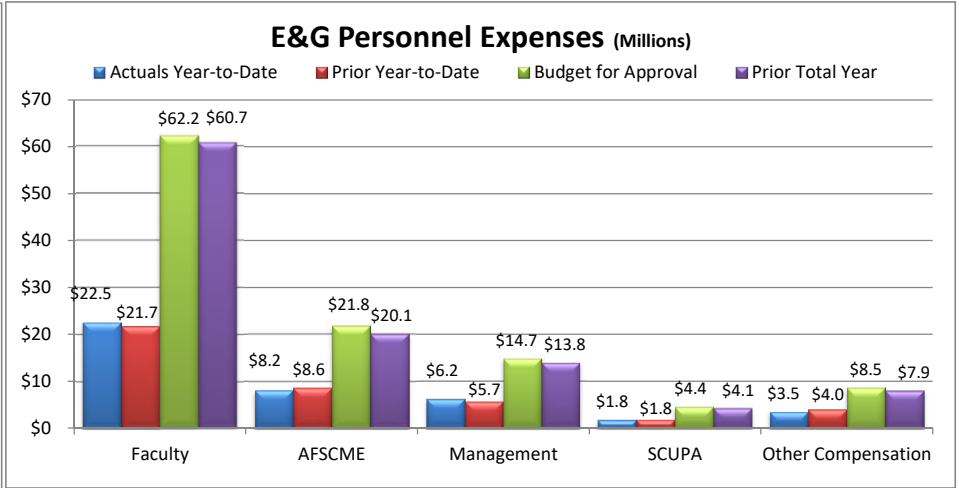
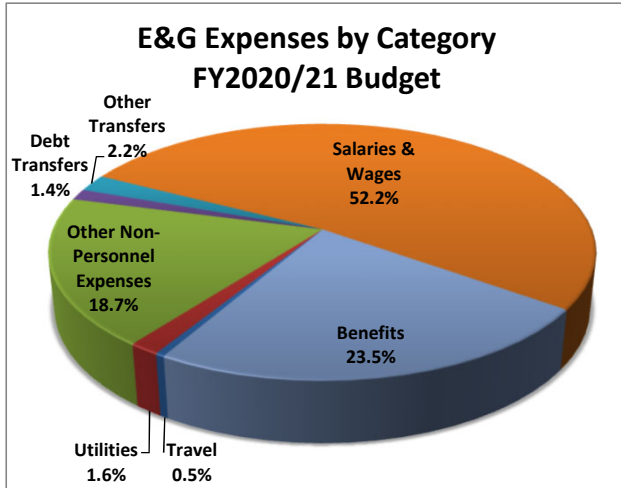
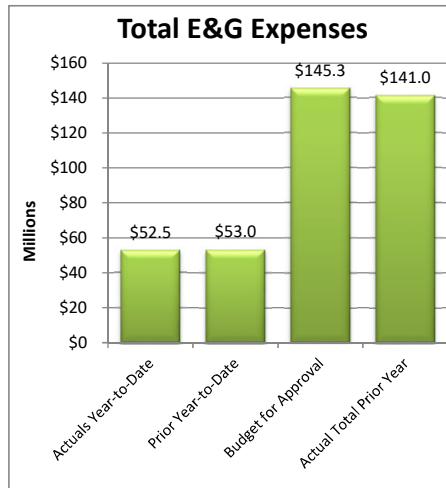
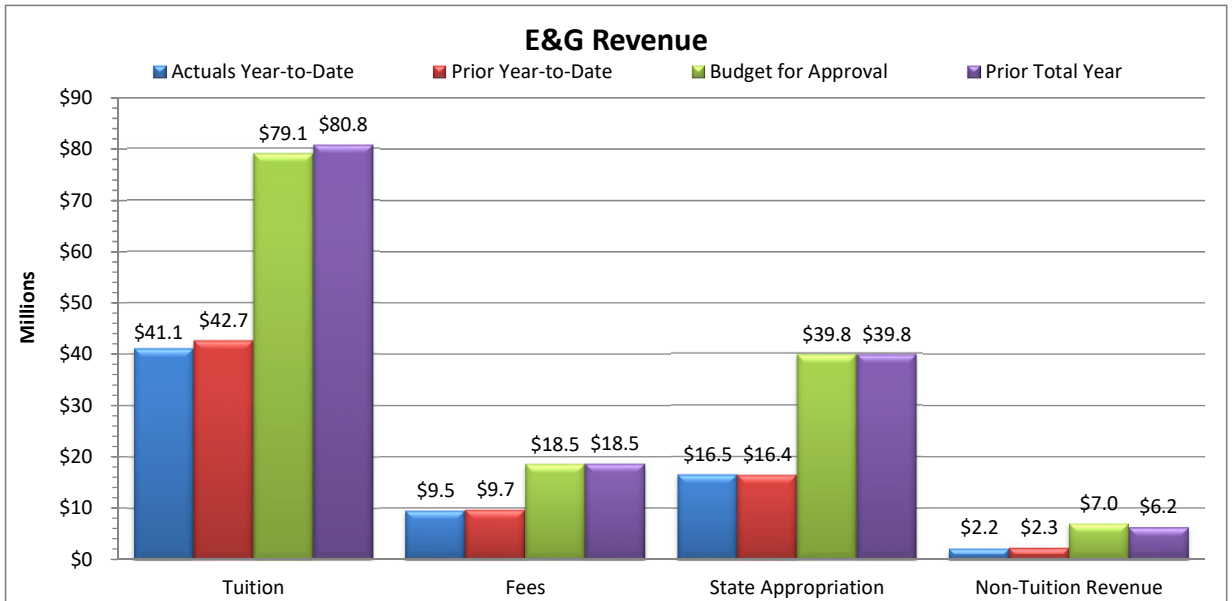


Slippery Rock University
Monthly Financial Report
Fiscal Year 2020/21 Through November 30, 2020

Total E&G Selected Revenue & Expenses			
	Budget 2020-21	Actual Year-to-Date 2020-21	% of Budget
Revenue:			
Tuition	\$79,069,245	\$41,081,461	52.0%
Fees	\$18,456,073	\$9,470,967	51.3%
State Appropriation	\$39,786,283	\$16,533,695	41.6%
Non-Tuition Revenue	\$6,977,615	\$2,153,876	30.9%
Total Revenue	\$144,289,215	\$69,239,999	48.0%
Expenses:			
Personnel Related	\$110,005,475	\$42,201,234	38.4%
Non-Personnel Costs:			
Travel	\$693,544	(\$5,684)	-0.8%
Utilities	\$2,276,396	\$822,649	36.1%
Other Non-Personnel Expenses	\$27,181,298	\$9,365,024	34.5%
Mandatory Transfers (Debt)	\$2,035,984	\$0	0.0%
Non-Mandatory Transfers	\$3,125,356	\$121,824	3.9%
Total Expenses	\$145,318,053	\$52,505,047	36.1%
Net Surplus/(Deficit/Use of Reserves)	(\$1,028,838)	\$16,734,952	



Notes:
As of November 30, 2020, 41.7% of the fiscal year has passed and 58.3% remains. Note that revenue and several expense categories are not recognized evenly throughout the year.

Revenue:
Tuition and fee revenue are as of November 30, 2020 which includes tuition & fee revenue from Fall 2020, deferred revenue from Summer 2020, and Winter 2020. Note that total revenue will be recognized with each new term throughout the fiscal year, to June 30, 2021.

Non-tuition revenue consists of interest income, rental of facilities, cell tower reimbursement, ID card fee, transcript fee, ticket sales, parking decals & tickets, Pepsi funding.

Expenses:
Personnel costs are not incurred evenly throughout the year, but rather follow the established pay schedules.
Other Non-personnel expenses include such costs as equipment and furnishings, scholarships, library costs, contracted services, advertising, software license fees, supplies, bad debt, etc.