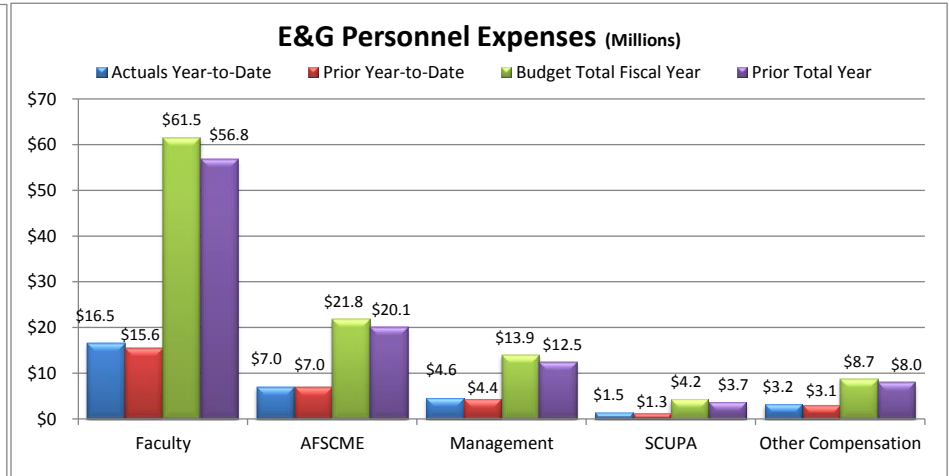
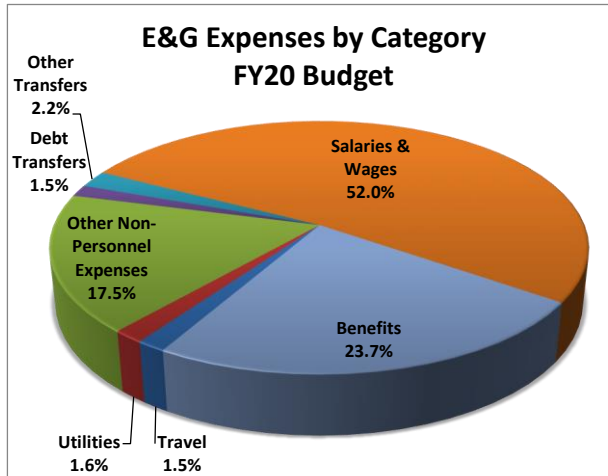
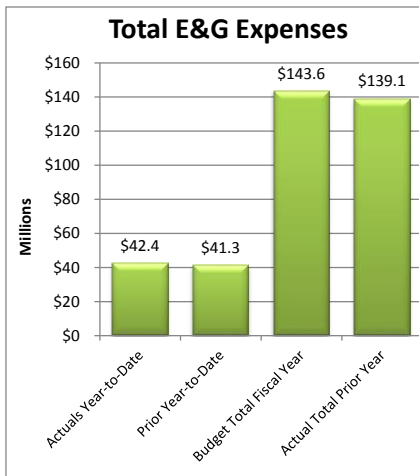
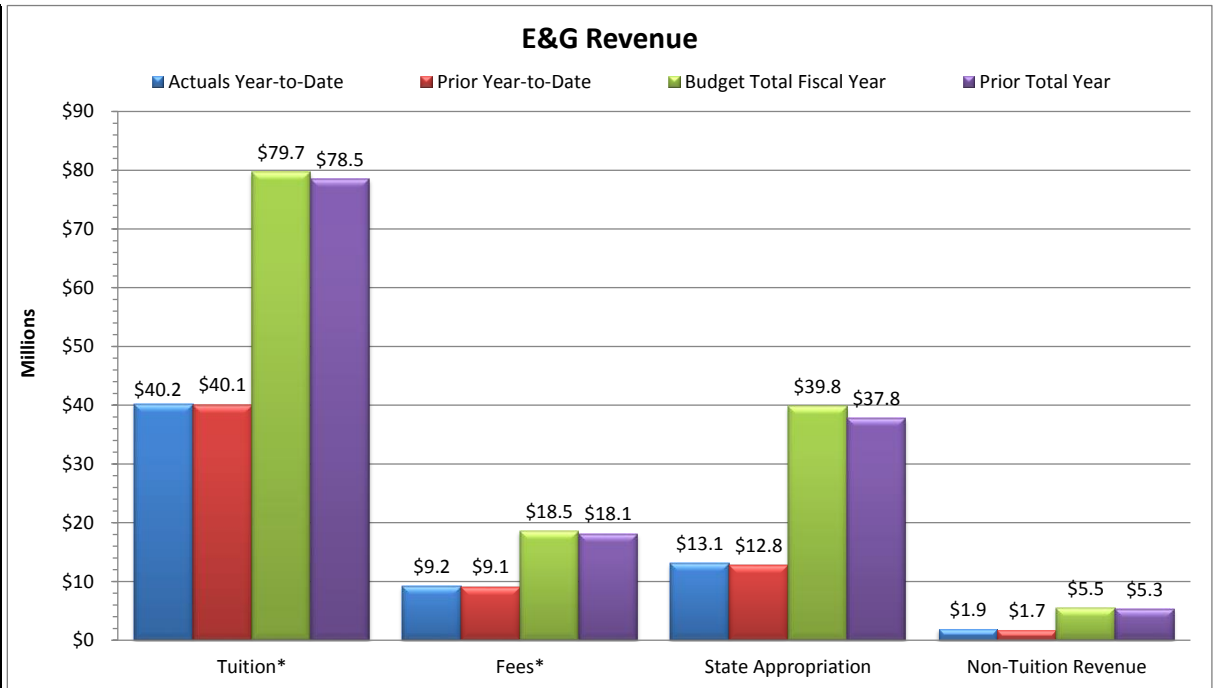


**Slippery Rock University**  
**Monthly Financial Report**  
**Fiscal Year 2019/20 Through October 31, 2019**

<b>Total E&amp;G</b>			
<b>Selected Revenue &amp; Expenses</b>			
	<b>Approved Budget 2019-20</b>	<b>Actual Year-to-Date 2019-20</b>	<b>% of Budget</b>
<b>Revenue:</b>			
Tuition*	\$79,709,645	\$40,241,211	50.5%
Fees*	\$18,549,953	\$9,163,543	49.4%
State Appropriation	\$39,786,283	\$13,147,892	33.0%
Non-Tuition Revenue	\$5,510,302	\$1,925,250	34.9%
<b>Total Revenue</b>	<b>\$143,556,183</b>	<b>\$64,477,897</b>	<b>44.9%</b>
<b>Expenses:</b>			
Personnel Related	\$108,609,470	\$32,895,561	30.3%
<b>Non-Personnel Costs:</b>			
Travel	\$2,177,485	\$535,734	24.6%
Utilities	\$2,331,410	\$777,691	33.4%
Other Non-Personnel Expenses	\$25,192,191	\$7,477,274	29.7%
Mandatory Transfers (Debt)	\$2,132,019	\$0	0.0%
Non-Mandatory Transfers	\$3,113,607	\$742,447	23.8%
<b>Total Expenses</b>	<b>\$143,556,183</b>	<b>\$42,428,707</b>	<b>29.6%</b>
<b>Net Surplus/(Deficit/Use of Reserves)</b>	<b>\$0</b>	<b>\$22,049,189</b>	

\*Tuition & Fee revenue is recorded/recognized in advance of many of the corresponding expenses



**Notes:**

As of October 31, 2019, 33.3% of the fiscal year has passed and 66.7% remains. Note that revenue and several expense categories are not recognized evenly throughout the year.

**Revenue:**

Revenue - Tuition and fee revenue as of October 31, 2019 includes the second half of Summer 2019 and Fall 2019 revenue. Note that total revenue will be recognized with each new term throughout the fiscal year, to June 30, 2020.

Non-tuition revenue consists of interest income, rental of facilities, cell tower reimbursement, ID card fee, transcript fee, ticket sales, parking decals & tickets, Pepsi funding.

**Expenses:**

Personnel costs are not incurred evenly throughout the year, but rather follow the established pay schedules.

Other Non-personnel expenses include such costs as equipment and furnishings, scholarships, library costs, contracted services, advertising, software license fees, maintenance/office supplies, bad debt expense, software, etc.