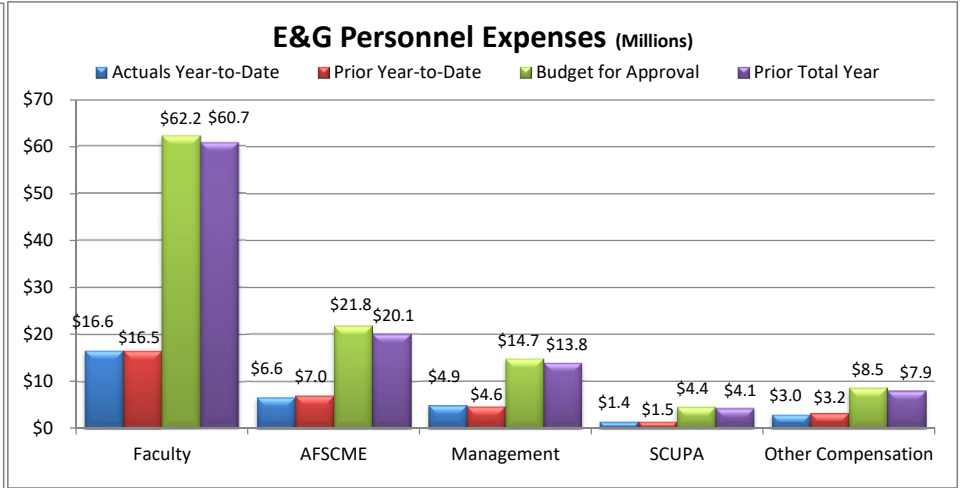
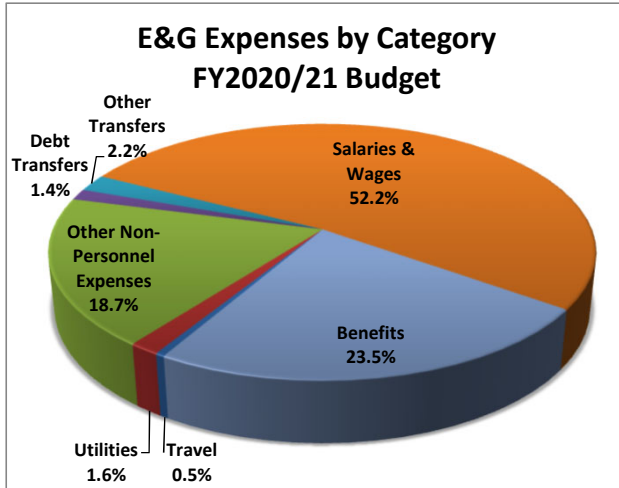
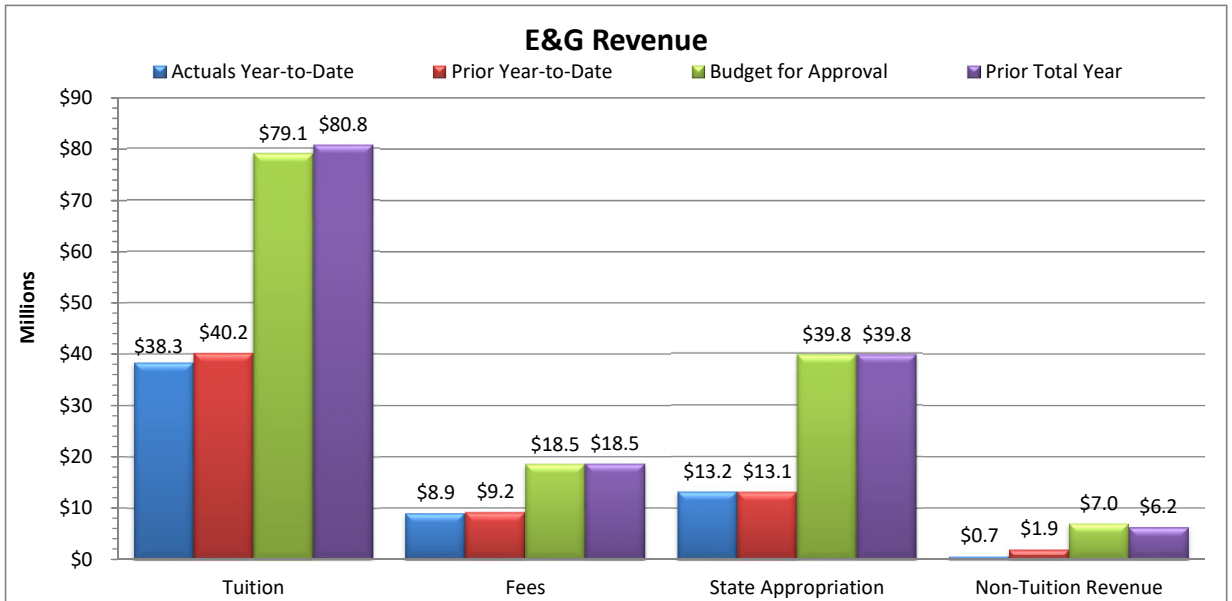


**Slippery Rock University**  
**Monthly Financial Report**  
**Fiscal Year 2020/21 Through October 31, 2020**

Total E&G Selected Revenue & Expenses			
	Budget 2020-21	Actual Year-to-Date 2020-21	% of Budget
<b>Revenue:</b>			
Tuition	\$79,069,245	\$38,347,894	48.5%
Fees	\$18,456,073	\$8,949,075	48.5%
State Appropriation	\$39,786,283	\$13,226,956	33.2%
Non-Tuition Revenue	\$6,977,615	\$670,794	9.6%
<b>Total Revenue</b>	<b>\$144,289,215</b>	<b>\$61,194,719</b>	<b>42.4%</b>
<b>Expenses:</b>			
Personnel Related	\$110,005,475	\$32,568,760	29.6%
<b>Non-Personnel Costs:</b>			
Travel	\$693,544	(\$17,795)	-2.6%
Utilities	\$2,276,396	\$635,366	27.9%
Other Non-Personnel Expenses	\$27,181,298	\$7,831,856	28.8%
Mandatory Transfers (Debt)	\$2,035,984	\$0	0.0%
Non-Mandatory Transfers	\$3,125,356	\$122,553	3.9%
<b>Total Expenses</b>	<b>\$145,318,053</b>	<b>\$41,140,739</b>	<b>28.3%</b>
<b>Net Surplus/(Deficit/Use of Reserves)</b>	<b>(\$1,028,838)</b>	<b>\$20,053,981</b>	



**Notes:**  
 As of October 31, 2020, 33.3% of the fiscal year has passed and 66.7% remains. Note that revenue and several expense categories are not recognized evenly throughout the year.

**Revenue:**  
 Tuition and fee revenue are as of October 31, 2020 which includes Fall 2020 revenue and revenue deferred from Summer 2020. Note that total revenue will be recognized with each new term throughout the fiscal year, to June 30, 2021.

Non-tuition revenue consists of interest income, rental of facilities, cell tower reimbursement, ID card fee, transcript fee, ticket sales, parking decals & tickets, Pepsi funding.

**Expenses:**  
 Personnel costs are not incurred evenly throughout the year, but rather follow the established pay schedules.  
 Other Non-personnel expenses include such costs as equipment and furnishings, scholarships, library costs, contracted services, advertising, software license fees, supplies, bad debt, etc.